



ENVIRONMENTAL RESPONSIBILITY REPORT



2023

**ADMINISTRACIÓN DEL SISTEMA
PORTUARIO NACIONAL LAZARO CARDENAS, SA
DE CV**

Prepared during the period 2024



DESCRIPTION

The Lázaro Cárdenas National Port System Administration, S.A. de C.V. (ASIPONA) is part of the Federal Parastatal Public Administration, as set forth in articles 1, 3, section II, and 46, section II, of the Organic Law of the Federal Public Administration; 2, 6 and 28 of the Federal Law of Parastatal Entities; 2, section III, of the Regulations of the Federal Law of Parastatal Entities. The above is due to the fact that it is a company with majority state participation, incorporated according to the content of public deed 30,117, dated December 15, 1993.

In December 1993, the Ministry of Communications and Transportation (SCT) granted the



Concession Title in favor of the Integrated Port Administration of Lázaro Cárdenas, SA de CV (APILAC), this being one of the sixteen federal ports in the country of Mexico. In 2022, by agreement of the Presidency of the Mexican Republic, the 16 federal ports will be grouped into the Sector coordinated by the Ministry of the Navy, which will give a new name to the 16 federal ports, becoming Administrations of the National Port System (ASIPONA).

The main activities of the Company ASIPONA LÁZARO CÁRDENAS are the following:

- Planning and administration of the operation of the Lázaro Cárdenas Michoacán Port Complex.
- Planning and distribution of port financial resources Lazaro Cardenas, Michoacán.
- Set port infrastructure fees.
- Grant contracts for partial transfer of rights for the construction and operation of port facilities and terminals.
- Granting permit contracts for the provision of port services:
 - Boat service,

- General services to vessels and
 - Maneuvering services.
- Provide the port with basic infrastructure in:
 - Dredging, Common roads, Access, Beach protection, Lighthouse, Basic services and Railway tracks.

Geographic Location:

The Port of Lázaro Cárdenas is located on the Pacific Ocean coast, in the state of Michoacán – Country Mexico, with 2,102.36 hectares of land and 2,264.52 hectares of water.



The port of Lázaro Cárdenas is classified as:

I. For your navigation on:

a) High altitude, since it serves vessels and goods in navigation between national and international ports.

II. For its facilities and services, for example, in:

a) Commercial, handling of goods in maritime traffic.

b) Industrial, management of assets related to industries established in the port and terminal area.

The port of Lázaro Cárdenas manages 6 lines of business:

1. Containers
2. Cars
3. Loose General Cargo
4. Bulk Mineral
5. Agricultural Bulk
6. Fluids



Port Infrastructure:

Public terminals: Specialized Container I, Multiple Uses I, II and III, Agricultural Bulk, Specialized Container II, Specialized Automobile, Bulk Mineral and Steel Derived Products and Fluid Handling.

Private terminals: Coal, Metals and Minerals, Fertilizers and Petroleum Fluids.

Facility: Photo-sanitary inspection point, storage yard, specialized facility for the reception and storage of oils.

Trade facilitation infrastructure: Logistics Services Area for Motor Transport, Storage Yard, Export Customs, Import Customs, Maritime Traffic Control Tower, Corporate Building and Business Center. See Port Map at this link file:///C:/Users/pcampos/Desktop/mapa_puerto.pdf

Management: The Lázaro Cárdenas National Port System Administration, in the scope of its services offered; Use of Port Infrastructure, Port Services and Assignment and monitoring of Contracts for Partial Transfer of Rights and Obligations and Port and related Services. It has adopted various models and methodologies in matters of quality, environment, safety and health at work, information security, security in the supply chain, labor equality, etc., to ensure competitive management with responsibility and transparency.

For the specific case in Environmental matters, it reports its **environmental performance** in the period 2023, taking as background data from the year 2022 and as part of the continuous improvement the progress to the first semester of 2024, thereby affirming its commitment to caring for the environment, as declared in its Environmental Policy.



ENVIRONMENTAL POLICY OF PORT LAZARO CARDENAS

The Administration of the Lázaro Cárdenas National Port System, SA de CV, responsible for managing and maintaining the infrastructure for the provision of port services and verifying the proper operation of the terminals, is committed to caring for and protecting the environment, identifying the significant environmental aspects of the port's activities and operations, to mitigate adverse environmental impacts.

Complying with applicable legislation and regulations and other requirements such as contractual ones, to promote and extend this commitment to ethics and values with the care of the environment; and among the port community, seeking at all times the adoption of best practices in environmental matters and trying, whenever possible, to go beyond what is strictly regulatory.

TO MINIMIZE THE EFFECT AND IMPACT ON THE ENVIRONMENT, WE MUST:

- Maintain environmental management programs that guide and improve our environmental performance, which focuses on reducing and preventing pollution, to:
 - Monitor water and air quality.
 - Monitor noise emissions from fixed sources.
 - Separate waste to control and minimize its generation.
 - Monitor the final disposal of hazardous waste.
- Prevent environmental accidents and reduce the effects they may cause.
- Maintain the rational use of our resources as efficiently as possible, such as water, electricity and fuel, working towards the following specific objectives:
 - Achieve efficient water consumption.
 - Achieve efficient consumption of electrical energy for its sustainable use.
 - Achieve efficient control of fuel consumption in the vehicle fleet.
 - Estimate carbon dioxide emissions from the combustion of energy.
- Identify, monitor and analyze environmental performance indicators.
- Understand the environmental needs and expectations of the port community, the local community and organizations or sectors, in order to take appropriate action.
- Demand environmentally friendly products and services that minimize negative environmental effects in their production, use, destruction or recycling.
- Promote the use of the best viable technologies in processes and activities to mitigate the depletion of natural resources.
- Provide the necessary training and information to employees and relevant stakeholders on environmental issues and raise their awareness so that they promote a healthier environment and care for resources in their daily work.





ASIPONA Lázaro Cárdenas, within the voluntary commitment acquired to ensure environmental sustainability in the port area it manages, promotes initiatives in the Port Community in order to:

- Work in synergy with: assignees, port service providers, tenants, suppliers, contractors, authorities and any other relevant interested part, in relation to our organizational context, establishing efficient communication mechanisms for compliance with the Environmental Policy.
 - Promote and support the implementation of best environmental practices among companies in the Port Community.
 - Periodically evaluate and measure the impact generated by the activities carried out in the port area by calculating the Carbon Footprint.
- Periodically review the Environmental Policy, based on the results of the audits and projecting the changes that the organization will undergo, in accordance with the entity's strategic planning.
 - Allocate the necessary resources to ensure compliance with the provisions of this Environmental Policy.
 - Maintain an environmental management system in accordance with the requirements of ISO 14001:2015.
 - Publish environmental results at least every two years and make them available to the public on the entity's website.

Vice Admiral Anselmo Osorio Fraga. - CEO
Rev. 4, 02/07/2024





ENVIRONMENTAL ASPECTS, IMPACTS AND PERFORMANCE

The Administration of the Lázaro Cárdenas National Port System, SA de CV, identifies the significant environmental aspects of its processes, activities and/or services, which it provides or has some participation in (contractors and suppliers up to Assignees and Port Service Providers, having influence over the latter two and not direct control over their operations). It also identifies the legal and other requirements that are applicable to environmental aspects. Environmental Aspects are elements of the organization's activities or services that may interact with the environment.

- Significant Environmental Aspects are those that may interact negatively, for which Operational Controls are in place, in order to ensure that processes do not generate deviations that may affect environmental performance.
- Likewise, the relevant environmental aspects identified are those associated with the entity's activities with the greatest duration and frequency.
- The type of Environmental Aspect is classified as;
 1. Normal Condition: Environmental aspects identified in normal operation.
 2. Abnormal Condition: Environmental aspects identified in abnormal operation.
 3. Emergency Condition: Environmental aspects identified when emergency situations occur.

Note: Climate change causes a sudden impact in the form of natural disasters, such as floods or earthquakes, consider it an emergency situation.
Climate change is determined as an external issue that can affect port operations.

The Concessionaire companies or Port Terminals identify their environmental aspects and impacts generated from the perspective of the life cycle, and in accordance with their environmental management system, the Administration of the Lázaro Cárdenas National Port System SA de CV (ASIPONA), verifies their identification and monitoring twice a year.

The review and update of Environmental Aspects is carried out at least twice a year, or after any changes have been reported and implemented.

Registration of environmental aspects and legal requirements						
List of Environmental Aspects		Port: Lazaro Cardenas				
1	2	3	4	5	6	7
Ref. Nr.	(sub) department, operators	Impact on	Responsible person/organization	Applicable legislation	Legal requirement	Control measures





ADMINISTRATION						
A1	Vehicle use- Gas emissions	air / soil	ASIPONA	Regulations of the General Law on Ecological Balance and Environmental Protection in matters of Prevention and Control of Atmospheric Pollution / NOM-041-SEMARNAT-2006.	Article 10 and 13, section II, and article 28 / establishes the maximum permissible limits for the emission of polluting gases from the exhaust of motor vehicles in circulation that use gasoline as fuel.	Monitoring air quality in the port area and levels of contaminants in the environment according to the type of substance or gas present to prevent contingencies.
A2	Generation of urban solid waste/ special handling waste	water / soil	ASIPONA	General Law on Ecological Balance and Environmental Protection. Law for the Prevention and Integrated Management of Waste in the State of Michoacán. Cleaning Regulations for the Municipality of Lázaro Cárdenas, Mich.	Title Three, Chap. IV, Art. 134. For the prevention and control of soil pollution, the following criteria shall be considered: It is necessary to prevent and reduce the generation of municipal and industrial solid waste; incorporate techniques and procedures for its reuse and recycling, as well as regulate its efficient handling and disposal. Title Three, Chap. IV, Art. 137.- The operation of the systems for collection, storage, transportation, housing, reuse, treatment and final disposal of municipal solid waste is subject to authorization from the Municipalities or from Mexico City, in accordance with their local laws on the matter and the applicable Mexican official standards. Title Five, Chap. II, Art. 50.- Individuals or legal entities that generate urban waste or waste requiring special handling are responsible for the waste throughout its life cycle, including during its handling, collection, storage, transportation, recycling, treatment or final disposal, in accordance with the provisions of this Law and other applicable regulations. CAP V, ART. 32 Waste or residue can be classified in such a way that it can be properly collected, transported and reused, using various containers.	Dissemination for awareness of urban solid waste generation. Contract with company to dispose of generated waste correctly. Urban solid waste classification system. Special waste management log.





A3	Electricity consumption	air	ASIPONA	<p>General Climate Law on Change.</p> <p>Law for the Sustainable Use of Energy.</p>	<p>Title Four, Chap. III, Art. 34., In order to reduce emissions, the agencies and entities of the federal administration, the Federative Entities and the Municipalities, within the scope of their competence, shall promote the design and elaboration of mitigation policies and actions associated with the corresponding sectors, considering the following provisions: e) Promote the use of renewable energy for the generation of electricity, in accordance with the applicable legislation on the matter.</p> <p>Title Four, Chap. I., Art. 20. For the integration and updating of the Subsystem, the agencies and entities of the Federal Public Administration, as well as users with a high energy consumption pattern, shall provide the Commission with the following information on the energy use obtained in the immediately preceding year. The production, export, import and consumption of energy, by type of energy.</p>	<p>Solar panel maintenance and installation program.</p> <p>Monitoring of electricity consumption, CONUEE Savings Goals. MINUTES.</p>
----	-------------------------	-----	---------	---	---	---





A4	Water consumption	water / soil	ASIPONA	<p>General Law on Ecological Balance and Environmental Protection.</p> <p>National Water Law.</p> <p>Federal Rights Law. Applicable Provisions Regarding National Waters 2022.</p>	<p>ARTICLE 17 TER. - The agencies of the Federal Public Administration, the Federal Legislative Branch and the Judicial Branch of the Federation shall install a rainwater collection system on the properties under their charge, taking into account the requirements of the geographic area in which they are located and the physical, technical and financial possibilities that are convenient in each case. This water shall be used for bathrooms, cleaning floors and windows, and watering gardens and ornamental trees.</p> <p>Title Three, Chap. I, Art. 89, The criteria for the sustainable use of water and aquatic ecosystems shall be considered in: II. The granting of concessions, permits and, in general, all types of authorization for the use of natural resources.</p> <p>Title Two, Chap. VII., Art. 222., Individuals and legal entities that use, exploit or take advantage of national waters, either in fact or under titles of allocation, concession, authorization or permit, granted by the Federal Government, are obliged to pay the right to water, in accordance with the territorial division contained in article 231 of this Law.</p>	<p>Concession title for the use of national waters with number 04MCH123433/17EADL 07.</p> <p>Water consumption indicators.</p> <p>Maintenance program and compliance with the reading-taking program.</p>
----	-------------------	--------------	---------	--	---	---





A5	Wastewater discharge	water	ASIPONA	General Law on Ecological Balance and Environmental Protection. National Water Law.	Title Four, Chapter III, Art. 117. For the prevention and control of water pollution, the following criteria shall be considered: III. The use of water in productive activities that may produce its pollution entails the responsibility of treating the discharges, in order to reintegrate it in suitable conditions for its use in other activities and to maintain the balance of the ecosystems . Title Four, Chapter III, Art. 29., The concessionaires shall have the following obligations, in addition to others established in this title: IX. Provide the information and documentation requested by "the Water Authority" or, where appropriate, "the Attorney General's Office", in strict adherence to the deadlines set in accordance with the current legal framework, to verify compliance with the provisions of this Law, the corresponding regional regulations, and those established in the concession, assignment or discharge permit titles referred to in this Law.	Maintenance of wastewater treatment plants. Wastewater quality studies according to NOM'S. Inspection report.
----	----------------------	-------	---------	--	---	--

CCPDO AND PSP (PARTIAL TRANSFER CONTRACTS) OF RIGHTS AND PORT SERVICE PROVIDERS)

O1	Hazardous Waste Generation Trailer	water / soil / flora / fauna	Port service provider	General Law for the Prevention and Comprehensive Management of Waste / NOM-052-SEMARNAT-2005.	Article 45 / Articles 35 and 39 section I, identification, classification and lists of hazardous waste.	Necessary preventive measures are taken during fuel supply to avoid contingencies.
O2	Load-Potential Spill of Hazardous Materials	water / soil	Assignee	NOM-005-SCT-2008.	Section 4.1 Emergency information for the transportation of hazardous substances, materials and waste.	Contingency plans established by the institution in conjunction with port terminals.



O3	Stowage-Noise Generation	Impact on humans	Assignee	Law on Ecological Balance and Environmental Protection of the State of Michoacán de Ocampo / Regulations of the Law on Ecological Balance and Environmental Protection of the State of Michoacán de Ocampo.	Article 158 / Article 148.	Perimeter noise assessment studies are periodically carried out in the port area.
O4	Intra-port haulage - Fuel consumption	Scarcity of natural resources	Assignee	Law for the Sustainable Use of Energy	Efficient Use of Energy.	Inspections of environmental programs for the efficient use of energy, including fuel, are carried out to optimize its consumption.
O5	Technical inspection-Fuel consumption	Scarcity of natural resources	Assignee	Law for the Sustainable Use of Energy	Efficient Use of Energy.	Inspections of environmental programs for the efficient use of energy, including fuel, are carried out to optimize its consumption.
O6	Equipment rental-Fuel consumption	Scarcity of natural resources	Assignee	Law for the Sustainable Use of Energy	Efficient Use of Energy.	Inspections of environmental programs for the efficient use of energy, including fuel, are carried out to optimize its consumption.
O7	Discharge or dumping- Discharge of wastewater	water/soil	Assignee	Port Law / Sea Law / National Water Law / Discharge Law	Article 44 / Article 17 / Article 3 / Article 3.	Authorization Inspection of the supplier for the disposal of wastewater / treatment plants / studies at treatment plants every 3 months and daily routines for verification of PH AND SLUDGE.
O8	Unloading or dumping - Potential spill of hazardous materials	water/soil	Assignee	NOM-005-SCT-2008	Section 4. 1 Emergency information for the transportation of hazardous substances, materials and waste.	Contingency plans established by the institution in conjunction with port terminals.
O9	Download or dumping - Generation of special handling waste	water / land / impact on humans	Assignee	Regulations of the General Law on Prevention and Integrated Waste Management.	Article 11, 12, 14 and 15.	Special container for storing the hazardous waste generated and its collection through an authorized provider.



O10	Discharge or discharge - dust emission	air	Assignee	NOM-085-SEMARNAT-2011	Maximum permissible emission levels from indirect heating combustion equipment and their measurement.	Masks, dust collector, grill, hopper, bands with lids.
O11	Download or dump - Electricity consumption	Scarcity of natural resources	Assignee	Law for the Sustainable Use of Energy	Efficient Use of Energy.	LED lighting, awareness through administrative control for efficient use of energy consumption.
O12	Discharge or flushing-Water consumption	Scarcity of natural resources	Assignee	National Water Law and its Regulations / General Law on Ecological Balance and Environmental Protection / Federal Rights Law.	Article 20 / Article 92 / Article 225 Section I.	Awareness program for resource use / water saving.
O13	Download or dump- Emission of gases	air	Assignee	NOM-045-SEMARNAT-2006	Maximum permissible opacity limits, test procedure and technical characteristics of the measuring equipment.	Technology to know the conditions of the stationary tank in real time. / Verification of the connection of the dispatch pumps, exclusive area for storing gas tanks.
O14	Download or stash- Consumption of wood and its derivatives	Scarcity of natural resources	Assignee	Regulations of the General Law on Prevention and Integrated Waste Management.	Articles 11, 12, 14 and 15.	Supplier for the disposal and recycling of generated paper.
Construction and Maintenance						
C1	Civil works - Generation of special waste management	Water / air / soil / impact on humans, flora and fauna.	Contractor	Regulations of the General Law on Prevention and Integrated Waste Management.	Article 15 and 19.	Inspection of authorization to deposit urban solid waste and special handling. Photographic report of evidence of the final destination of the ERM.
C2	Civil works - Water consumption	Water / Scarcity of natural resources.	Contractor	National Water Law / Regulations of the National Water Law / General Law on Ecological Balance and Environmental Protection.	Article 20 / Article 30 / Article 92	Inspection of the sanatorium's logbook, list of the talk on the rational use of water.
Prepared by: Ecology / SGI Representative		Approved: Sub-directorate of Ecology				Date: 30 / September / 2024
ECOSLC Doc P1						Page 1 of 1



Result of operational performance indicators:

Significant environmental issues at the port of Lázaro Cárdenas.	Index element	Calculation method	Target value	Presentation of the indicator (calculation details)		
				2022	2023	1st semester 2024
Non-renewable energy consumption	Port of Lázaro Cárdenas, administrative areas and the Port Enclosure (roads, bascule bridge and access towers, car yards).	KW/H of energy consumed in the Port of Lázaro Cárdenas (directly managed areas)	Less than or equal to the previous year's consumption.	Annual consumption of 1,694,607 KW/H in the Port of Lázaro Cárdenas (Administrative offices and common areas).	Annual consumption of 1,810,006 KW/H in the Port of Lázaro Cárdenas (Administrative offices and common areas).	Annual consumption of 858,387 KW/H in the Port of Lázaro Cárdenas (Administrative offices and common areas).
Clean Energy Consumption (renewable)			Greater than or equal to the previous year's consumption.	Annual consumption of 1,134,925 KW/H of clean energy in the Port of Lázaro Cárdenas (Administrative offices and common areas).	Annual consumption of 1,096 135 KW/H of clean energy in the Port of Lázaro Cárdenas (Administrative offices and common areas).	Annual consumption of 583,318 KW/H of clean energy in the Port of Lázaro Cárdenas (Administrative offices and common areas).

Significant environmental issues at the port of Lázaro Cárdenas.	Index element	Calculation method	Target value	Presentation of the indicator (calculation details)		
				2022	2023	1st semester 2024
Water Consumption	Use of water for irrigation in common areas of the port area, toilets and offices at ASIPONA.	Water consumption	Less than or equal to the previous year's consumption.	6,457 m3 of water consumption in administrative activities and activities in common areas of the port area.	6,440 m3 of water consumption in administrative activities and activities in common areas of the port area.	3,032 m3 of water consumption in administrative activities and activities in common areas of the port area.

Significant environmental issues at the port of Lázaro Cárdenas.	Index element	Calculation method	Target value	Presentation of the indicator (calculation details)		
				2022	2023	1st semester 2024
Fuel Consumption	Fuel use in ASIPONA vehicle fleet (40 vehicles)	Fuel consumption	Less than or equal to the previous year's consumption.	1,671 liters of fuel.	1,411 liters of fuel.	726 liters of fuel.



Significant environmental issues at the port of Lázaro Cárdenas.	Index element	Calculation method	Target value	Presentation of the indicator (calculation details)		
				2022	2023	1st semester 2024
Air quality	Ambient air quality in the Port Area.	No. of air quality monitoring	At least 1 Monitoring Service.	2	2	0 Note: during the first semester it was not possible to contract the air quality monitoring service, due to the closing of the budget due to a change of government, which will be opened during the month of October, and with it the contracting will be reactivated.

MONITORING RESULTS							
Calculation Form			Unit		Frequency		APPLICABLE LEGISLATION
Method No. 1920 of the EPA's electrochemical section on corrosion / Comparison of results with ambient air quality criteria established by the Ministry of Health.			Parameter		Biannual		NOM-025-SSA1-2021. NOM-022-SSA1-2019. NOM-023-SSA1-2021.
Spot	Concept	unit	Year	Jan-June	July-Dec	MAXIMUM ALLOWABLE LIMIT	OBSERVATIONS
1ST SAMPLING OF CORPORATE PATIO	Suspended particles 2.5 Microns	µg/m³	2022	9	13	41	fulfills
			2023	32	5		fulfills
	Suspended particles 10 Microns	µg/m³	2022	32	13	70	fulfills
			2023	27	32		fulfills
	Sulfur dioxide	ppm	2022	0.0321	0.032	104.8	fulfills
			2023	0	0		fulfills
Nitrogen Dioxide	ppm	2022	0.0007	0.0007	40,00	fulfills	
		2023	0	0		fulfills	
Carbon Dioxide	ppm	2022	0	0	25.0	fulfills	
		2023	0	0.0		fulfills	
2ND SAMPLING OF THE MIDDLE ISLAND TUM 11	PM 2.5 suspended particles	µg/m³	2022	18	4	41	fulfills
			2023	30	4		fulfills
	PM 10 suspended particles	µg/m³	2022	20	47	70	fulfills
			2023	19	16		fulfills
	ppm	2022	0.0319	0	104.8	fulfills	



	Sulfur dioxide		2023	0	0		fulfills
	Nitrogen Dioxide	ppm	2022	0.0007	-	70	fulfills
			2023	0	-		fulfills
	Carbon Dioxide	ppm	2022			25.0	fulfills
			2023		0.0		fulfills
3RD SAMPLING PATIO C	PM 2.5 suspended particles	µg/m³	2022	34	6	41	fulfills
			2023	129	6		fulfills
	PM 10 suspended particles	µg/m³	2022	52	42	70	fulfills
			2023	15	18		fulfills
	Sulfur dioxide	ppm	2022	0.03	0.0304	104.8	fulfills
			2023	0	0		fulfills
	Nitrogen Dioxide	ppm	2022	0.00	0.00067	40	fulfills
			2023	0	0		fulfills
	Carbon Dioxide	ppm	2022	0	0	25.0	fulfills
			2023	0	0.0		fulfills
4TH SAMPLING "CAYACAL ISLAND TANGO 8"	PM 2.5 suspended particles	µg/m³	2022	28	15	41	fulfills
			2023	25	6		fulfills
	PM 10 suspended particles	µg/m³	2022	34	129	70	fulfills
			2023	25	6		fulfills
	Sulfur Dioxide	ppm	2022	0.03	0.02895	104.8	fulfills
			2023	0	0		fulfills
	Nitrogen Dioxide	ppm	2022	0.00	0.00063	40	fulfills
			2023	0	0		fulfills
	Carbon Dioxide	ppm	2022	0	0	25.0	fulfills
			2023	0	0.0		fulfills

Significant environmental issues in the Port of Lázaro Cárdenas	Index element	Calculation method	Target value	Presentation of the indicator (calculation details)
				Parameters evaluated 2022, 2023 and 1st semester 2024.
Analysis of wastewater discharge	These analyses are that establish the maximum permissible limits of contaminants in wastewater discharges to national assets. For each wastewater discharge, two samples will be	In the Discharge Sampling Procedure, the following terms shall be understood as: Monthly Average: The value resulting from calculating the weighted average based	Sampling is carried out every quarter, according to the official Mexican standard NOM-001-SEMARNAT-1996, which establishes the maximum permissible limits of contaminants from wastewater discharges to national assets, the parameters to be evaluated as well as as in the parameter update in the	<ul style="list-style-type: none"> ➤ Arsenic ➤ Cadmium ➤ Cyanides ➤ Copper ➤ Total, chrome ➤ Biochemical Oxygen Demand ➤ Total, phosphorus ➤ Weighted average fats and oils ➤ Mercury ➤ Nickel ➤ Total, Nitrogen



	<p>taken each quarter (15 discharges and 3 discharges that are internal control of ASIPONA).</p>	<p>on flow, of the values resulting from the analysis of at least two average daily composite samples.</p>	<p>NOM-001-SEMARNAT-2021, which came into force in March 2023.</p>	<ul style="list-style-type: none"> ➤ Lead ➤ Sedimentable solids ➤ Total, suspended solids ➤ Zinc ➤ Fecal coliforms
--	--	--	--	---

NOM-001-SEMARNAT-1996

Parameter	MEASUREMENT OF THE INDICATOR					
	Location	Year	Result	MAXIMUM PERMISSIBLE LIMITS	UNIT	OBSERVATIONS
Arsenic	Customs Sanitary	2022	0.001	0.4	mg/L	Comply
		2023	0.001			Comply
	ASLA Sanitary Workers	2022	0.001	0.4		Comply
		2023	0.001	0.4		Comply
	Sanitary facilities of Cayacal I	2022	0.001	0.4		Comply
		2023	0.001			Comply
	Sanitary facilities of Cayacal II	2022	0.001	0.4		Comply
		2023	0.001			Comply
	Health workers at the emergency center	2022	0.001	0.4		Comply
		2023	0.001			Comply
	General Directorate Sanitary Workers	2022	0.001	0.4		Comply
		2023	0.001			Comply
	Sanitary Operations Management	2022	0.001	0.4		Comply
		2023	0.001			Comply
	Health workers of the island of En Medio	2022	0.001	0.4		Comply
		2023	0.001			Comply
	Malecon toilets	2022	0.001	0.4		Comply
		2023	0.001			Comply
	Sanitary facilities for administrative offices	2022	0.001	0.4		Comply
		2023	0.001			Comply
	Eréndira Beach toilets	2022	0.001	0.4		Comply
		2023	0.001			Comply
	Police Fiscal Health Services	2022	0.001	0.4		Comply
		2023	0.001			Comply
Sanitary Facilities of the Fiscalized Precinct	2022	0.001	0.4	Comply		
	2023	0.001		Comply		
Sanitarium Of The Theater Of The Malecón	2022	0.001	0.4	Comply		
	2023	0.001		Comply		
Control Tower Toilets	2022	0.001	0.4	Comply		
	2023	0.001		Comply		
Cadmium	Customs Sanitary	2022	0.005	0.4	Comply	
		2023	0.005		Comply	
	ASLA Sanitary Workers	2022	0.005	0.4	Comply	
		2023	0.005		Comply	
	Sanitary facilities of Cayacal I	2022	0.005	0.4	Comply	
		2023	0.005		Comply	
	Sanitary facilities of Cayacal II	2022	0.005	0.4	Comply	
		2023	0.005		Comply	
	2022	0.005	0.4	Comply		





	Health workers at the emergency center	2023	0.005	0.4	mg/L	Comply
	General Directorate Sanitary Workers	2022	0.005	0.4		Comply
		2023	0.005			Comply
	Sanitary Operations Management	2022	0.005	0.4		Comply
		2023	0.005			Comply
	Health workers of the island of En Medio	2022	0.005	0.4		Comply
		2023	0.005			Comply
	Malecon toilets	2022	0.005	0.4		Comply
		2023	0.005			Comply
	Sanitary facilities for administrative offices	2022	0.005	0.4		Comply
		2023	0.005			Comply
	Eréndira Beach toilets	2022	0.005	0.4		Comply
		2023	0.005			Comply
	Police Fiscal Health Services	2022	0.005	0.4		Comply
		2023	0.005			Comply
	Sanitary Facilities of the Fiscalized Precinct	2022	0.005	0.4		Comply
2023		0.005	Comply			
Sanitarium Of The Theater Of The Malecón	2022	0.005	0.4	Comply		
	2023	0.005		Comply		
Control Tower Toilets	2022	0.005	0.4	Comply		
	2023	0.005		Comply		
Cyanides	Customs Sanitary	2022	0.02	3	Comply	
		2023	0.02		Comply	
	ASLA Sanitary Workers	2022	0.02	3	Comply	
		2023	0.02		Comply	
	Sanitary facilities of Cayacal I	2022	0.02	3	Comply	
		2023	0.02		Comply	
	Sanitary facilities of Cayacal II	2022	0.02	3	Comply	
		2023	0.02		Comply	
	Health workers at the emergency center	2022	0.02	3	Comply	
		2023	0.02		Comply	
	General Directorate Sanitary Workers	2022	0.02	3	Comply	
		2023	0.02		Comply	
	Sanitary Operations Management	2022	0.02	3	Comply	
		2023	0.02		Comply	
	Health workers of the island of En Medio	2022	0.02	3	Comply	
		2023	0.02		Comply	
	Malecon toilets	2022	0.02	3	Comply	
		2023	0.02		Comply	
	Sanitary facilities for administrative offices	2022	0.02	3	Comply	
		2023	0.02		Comply	
	Eréndira Beach toilets	2022	0.02	3	Comply	
		2023	0.02		Comply	
	Police Fiscal Health Services	2022	0.02	3	Comply	
		2023	0.02		Comply	
	Sanitary Facilities of the Fiscalized Precinct	2022	0.02	3	Comply	
		2023	0.02		Comply	
	Sanitarium Of The Theater Of The Malecón	2022	0.02	3	Comply	
		2023	0.02		Comply	
Control Tower Toilets	2022	0.02	3	Comply		
	2023	0.02		Comply		





Copper	Customs Sanitary	2022	0.1	6	mg/L	Comply
		2023	0.1			Comply
	ASLA Sanitary Workers	2022	0.1	6		Comply
		2023	0.1	6		Comply
	Sanitary facilities of Cayacal I	2022	0.1	6		Comply
		2023	0.1			Comply
	Sanitary facilities of Cayacal II	2022	0.1	6		Comply
		2023	0.1			Comply
	Health workers at the emergency center	2022	0.1	6		Comply
		2023	0.1			Comply
	General Directorate Sanitary Workers	2022	0.1	6		Comply
		2023	0.1			Comply
	Sanitary Operations Management	2022	0.1	6		Comply
		2023	0.1			Comply
	Health workers of the island of En Medio	2022	0.1	6		Comply
		2023	0.1			Comply
	Malecon toilets	2022	0.1	6		Comply
		2023	0.1			Comply
	Sanitary facilities for administrative offices	2022	0.1	6		Comply
		2023	0.1			Comply
Eréndira Beach toilets	2022	0.1	6	Comply		
	2023	0.1		Comply		
Police Fiscal Health Services	2022	0.1	6	Comply		
	2023	0.1		Comply		
Sanitary Facilities of the Fiscalized Precinct	2022	0.1	6	Comply		
	2023	0.1		Comply		
Sanitarium Of The Theater Of The Malecón	2022	0.1	6	Comply		
	2023	0.1		Comply		
Control Tower Toilets	2022	0.1	6	Comply		
	2023	0.1		Comply		
Zinc	Customs Sanitary	2022	0.1	20	mg/L	Comply
		2023	0.1			Comply
	ASLA Sanitary Workers	2022	0.1	20		Comply
		2023	0.1	20		Comply
	Sanitary facilities of Cayacal I	2022	0.1	20		Comply
		2023	0.1			Comply
	Sanitary facilities of Cayacal II	2022	0.1	20		Comply
		2023	0.1			Comply
	Health workers at the emergency center	2022	0.1	20		Comply
		2023	0.1			Comply
	General Directorate Sanitary Workers	2022	0.1	20		Comply
		2023	0.1			Comply
	Sanitary Operations Management	2022	0.1	20		Comply
		2023	0.1			Comply
	Middle Island Sanitariums	2022	0.1	20		Comply
		2023	0.1			Comply
	Sanitarios Del Malecón	2022	0.1	20		Comply
		2023	0.1			Comply
	Sanitary Of The Administrative Offices	2022	0.1	20		Comply
		2023	0.1			Comply
Eréndira Beach toilets	2022	0.1	20	Comply		
	2023	0.1		Comply		
		2022	0.1	20	Comply	





	Police Fiscal Health Services	2023	0.1			Comply
	Sanitary Facilities of the Fiscalized Precinct	2022	0.1	20		Comply
		2023	0.1	20		Comply
	Restrooms at the Malecón Theater	2022	0.1	20		Comply
		2023	0.1			Comply
	Control Tower Sanitary Facilities	2022	0.1	20		Comply
2023		0.1			Comply	
Fecal coliforms	Customs Sanitary	2022	17	2000		Comply
		2023	42			Comply
	ASLA Sanitary Workers	2022	15	2000		Comply
		2023	93			Comply
	Sanitary facilities of Cayacal I	2022	8	2000		Comply
		2023	205			Comply
	Sanitary facilities of Cayacal II	2022	15	2000		Comply
		2023	74			Comply
	Health workers at the emergency center	2022	22	2000		Comply
		2023	33			Comply
	General Directorate Sanitary Workers	2022	21	2000		Comply
		2023	116			Comply
	Sanitary Operations Management	2022	25	2000		Comply
		2023	67			Comply
	Health workers of the island of En Medio	2022	22	2000		Comply
		2023	270			Comply
	Malecon toilets	2022	26	2000		Comply
		2023	35			Comply
	Sanitary facilities for administrative offices	2022	23	2000		Comply
		2023	98			Comply
	Eréndira Beach toilets	2022	24	2000		Comply
		2023	41			Comply
	Police Fiscal Health Services	2022	22	2000		Comply
		2023	36			Comply
Sanitary Facilities of the Fiscalized Precinct	2022	25	2000		Comply	
	2023	37			Comply	
Restrooms at the Malecón Theater	2022	26	2000		Comply	
	2023	45			Comply	
Control Tower Sanitary Facilities	2022	27	2000		Comply	
	2023	37			Comply	
Total chrome	Customs Sanitary	2022	0.05	1.5		Comply
		2023	0.05			Comply
	ASLA Sanitary Workers	2022	0.05	1.5		Comply
		2023	0.05			Comply
	Sanitary facilities of Cayacal I	2022	0.05	1.5		Comply
		2023	0.05			Comply
	Sanitary facilities of Cayacal II	2022	0.05	1.5		Comply
		2023	0.05			Comply
	Health workers at the emergency center	2022	0.05	1.5		Comply
		2023	0.05			Comply
	General Directorate Sanitary Workers	2022	0.05	1.5		Comply
		2023	0.05			Comply
Sanitary Operations Management	2022	0.05	1.5		Comply	
	2023	0.05			Comply	
		2022	0.05	1.5		Comply





	Health workers of the island of En Medio	2023	0.05			Comply
	Malecon toilets	2022	0.05	1.5		Comply
		2023	0.05			Comply
	Sanitary facilities for administrative offices	2022	0.05	1.5		Comply
		2023	0.05			Comply
	Eréndira Beach toilets	2022	0.05	1.5		Comply
		2023	0.05			Comply
	Police Fiscal Health Services	2022	0.05	1.5		Comply
		2023	0.05			Comply
	Sanitary Facilities of the Fiscalized Precinct	2022	0.05	1.5		Comply
2023		0.05			Comply	
Sanitarium Of The Theater Of The Malecón	2022	0.05	1.5		Comply	
	2023	0.05			Comply	
Control Tower Toilets	2022	0.05	1.5		Comply	
	2023	0.05			Comply	
Biochemical oxygen demand	Customs Sanitary	2022	28.2	200		Comply
		2023	19.3			Comply
	ASLA Sanitary Workers	2022	25.68	200		Comply
		2023	23.82			Comply
	Sanitary facilities of Cayacal I	2022	24.42	200		Comply
		2023	15			Comply
	Sanitary facilities of Cayacal II	2022	21.3	200		Comply
		2023	28.85			Comply
	Health workers at the emergency center	2022	27.6	200		Comply
		2023	21.6			Comply
	General Directorate Sanitary Workers	2022	20.7	200		Comply
		2023	19.74			Comply
	Sanitary Operations Management	2022	24.42	200		Comply
		2023	21.6			Comply
	Health workers of the island of En Medio	2022	25.68	200		Comply
		2023	23.1			Comply
	Malecon toilets	2022	21.9	200		Comply
		2023	27.78			Comply
	Sanitary facilities for administrative offices	2022	20.64	200		Comply
		2023	28.8			Comply
	Eréndira Beach toilets	2022	21.57	200		Comply
		2023	28.95			Comply
	Police Fiscal Health Services	2022	21.3	200		Comply
		2023	23.8			Comply
	Sanitary Facilities of the Fiscalized Precinct	2022	23.32	200		Comply
		2023	17.7			Comply
	Restrooms at the Malecón Theater	2022	22.56	200		Comply
		2023	23.85			Comply
Control Tower Sanitary Facilities	2022	25.68	200		Comply	
	2023	27,15			Comply	
Total phosphorus	Customs Sanitary	2022	0.3	30		Comply
		2023	0.56			Comply
	ASLA Sanitary Workers	2022	1.59	30		Comply
		2023	0.59			Comply
	Sanitary facilities of Cayacal I	2022	0.31	30		Comply
		2023	0.5			Comply
	Sanitary facilities of Cayacal II	2022	0.66	30		Comply
		2023	0.95			Comply





	Health workers at the emergency center	2022	1.13	30	mg/L	Comply
		2023	0.9			Comply
	General Directorate Sanitary Workers	2022	0.73	30		Comply
		2023	0.61			Comply
	Sanitary Operations Management	2022	1.81	30		Comply
		2023	0.93			Comply
	Health workers of the island of En Medio	2022	0.3	30		Comply
		2023	0.64			Comply
	Malecon toilets	2022	0.3	30		Comply
		2023	0.62			Comply
	Sanitary facilities for administrative offices	2022	0.3	30		Comply
		2023	0.48			Comply
	Eréndira Beach toilets	2022	0.3	30		Comply
		2023	0.8			Comply
Police Fiscal Health Services	2022	1.62	30	Comply		
	2023	0.99		Comply		
Sanitary Facilities of the Fiscalized Precinct	2022	0.3	30	Comply		
	2023	0.99		Comply		
Sanitarium Of The Theater Of The Malecón	2022	0.46	30	Comply		
	2023	0.6		Comply		
Control Tower Toilets	2022	1.25	30	Comply		
	2023	0.86		Comply		
Weighted average fats and oils	Customs Sanitary	2022	8.36	25	Comply	
		2023	8		Comply	
	ASLA Sanitary Workers	2022	10.59	25	Comply	
		2023	8.61		Comply	
	Sanitary facilities of Cayacal I	2022	10.68	25	Comply	
		2023	8.67		Comply	
	Sanitary facilities of Cayacal II	2022	9.09	25	Comply	
		2023	7.96		Comply	
	Health workers at the emergency center	2022	8.5	25	Comply	
		2023	8.29		Comply	
	General Directorate Sanitary Workers	2022	10.57	25	Comply	
		2023	8.69		Comply	
	Sanitary Operations Management	2022	11.73	25	Comply	
		2023	7.92		Comply	
	Health workers of the island of En Medio	2022	10.42	25	Comply	
		2023	8.77		Comply	
	Malecon toilets	2022	10.36	25	Comply	
		2023	8.65		Comply	
	Sanitary facilities for administrative offices	2022	10.25	25	Comply	
		2023	8.77		Comply	
Eréndira Beach toilets	2022	9.46	25	Comply		
	2023	8.26		Comply		
Police Fiscal Health Services	2022	10.4	25	Comply		
	2023	7.67		Comply		
Sanitary Facilities of the Fiscalized Precinct	2022	10,11	25	Comply		
	2023	8.27		Comply		
Restrooms at the Malecón Theater	2022	10.61	25	Comply		
	2023	8.75		Comply		
Control Tower Sanitary Facilities	2022	9.07	25	Comply		
	2023	8.21		Comply		
Mercury	Customs Sanitary	2022	0.0005	0.02	mg/L	Comply





	ASLA Sanitary Workers	2023	0.0005	0.02	mg/L	Comply
		2022	0.0005			Comply
	Sanitary facilities of Cayacal I	2023	0.0005	0.02		Comply
		2022	0.0005			Comply
	Sanitary facilities of Cayacal II	2023	0.0005	0.02		Comply
		2022	0.0005			Comply
	Health workers at the emergency center	2023	0.0005	0.02		Comply
		2022	0.0005			Comply
	General Directorate Sanitary Workers	2023	0.0005	0.02		Comply
		2022	0.0005			Comply
	Sanitary Operations Management	2023	0.0005	0.02		Comply
		2022	0.0005			Comply
	Health workers of the island of En Medio	2023	0.0005	0.02		Comply
		2022	0.0005			Comply
	Malecon toilets	2023	0.0005	0.02		Comply
		2022	0.0005			Comply
	Sanitary facilities for administrative offices	2023	0.0005	0.02		Comply
		2022	0.0005			Comply
	Eréndira Beach toilets	2023	0.0005	0.02		Comply
		2022	0.0005			Comply
Police Fiscal Health Services	2023	0.0005	0.02	Comply		
	2022	0.0005		Comply		
Sanitary Facilities of the Fiscalized Precinct	2023	0.0005	0.02	Comply		
	2022	0.0005		Comply		
Restrooms at the Malecón Theater	2023	0.0005	0.02	Comply		
	2022	0.0005		Comply		
Control Tower Toilets	2023	0.0005	0.02	Comply		
	2022	0.0005		Comply		
Nickel	Customs Sanitary	2023	0.1	4	mg/L	Comply
		2022	0.1			Comply
	ASLA Sanitary Workers	2023	0.1	4		Comply
		2022	0.1			Comply
	Sanitary facilities of Cayacal I	2023	0.1	4		Comply
		2022	0.1			Comply
	Sanitary facilities of Cayacal II	2023	0.1	4		Comply
		2022	0.1			Comply
	Health workers at the emergency center	2023	0.1	4		Comply
		2022	0.1			Comply
	General Directorate Sanitary Workers	2023	0.1	4		Comply
		2022	0.1			Comply
	Sanitary Operations Management	2023	0.1	4		Comply
		2022	0.1			Comply
	Health workers of the island of En Medio	2023	0.1	4		Comply
		2022	0.1			Comply
	Malecon toilets	2023	0.1	4		Comply
		2022	0.1			Comply
	Sanitary facilities for administrative offices	2023	0.1	4		Comply
		2022	0.1			Comply
Eréndira Beach toilets	2023	0.1	4	Comply		
	2022	0.1		Comply		
Police Fiscal Health Services	2023	0.1	4	Comply		
	2022	0.1		Comply		





	Sanitary Facilities of the Fiscalized Precinct	2022	0.1	4		Comply
		2023	0.1			Comply
	Sanitarium Of The Theater Of The Malecón	2022	0.1	4		Comply
		2023	0.1			Comply
	Control Tower Toilets	2022	0.1	4		Comply
2023		0.1	Comply			
Total Nitrogen	Customs Sanitary	2022	5.38	60	mg/L	Comply
		2023	8.87			Comply
	ASLA Sanitary Workers	2022	2.08	60		Complete
		2023	9.7			Complete
	Sanitary facilities of Cayacal I	2022	3.09	60		Complete
		2023	10.67			Complete
	Sanitary facilities of Cayacal II	2022	3.81	60		Complete
		2023	9.29			Complete
	Health workers at the emergency center	2022	4.52	60		Complete
		2023	10.25			Complete
	General Directorate Sanitary Workers	2022	3.05	60		Comply
		2023	10.39			Comply
	Sanitary Operations Management	2022	3.31	60		Comply
		2023	10,11			Comply
	Health workers of the island of En Medio	2022	3.99	60		Comply
		2023	10.51			Comply
	Malecon toilets	2022	6.26	60		Comply
		2023	11.06			Comply
	Sanitary facilities for administrative offices	2022	4	60		Comply
		2023	9.3			Comply
	Eréndira Beach toilets	2022	7.53	60		Comply
		2023	11.37			Comply
	Police Fiscal Health Services	2022	3.31	60		Comply
		2023	11.43			Comply
	Sanitary Facilities of the Fiscalized Precinct	2022	2.31	60		Comply
		2023	11.33			Comply
	Sanitarium Of The Theater Of The Malecón	2022	4.53	60		Comply
		2023	9.83			Comply
Control Tower Toilets	2022	5.63	60	Comply		
	2023	10.41		Comply		
Lead	Customs Sanitary	2022	0.2	1	mg/L	Comply
		2023	0.2			Comply
	ASLA Sanitary Workers	2022	0.2	1		Comply
		2023	0.2			Comply
	Sanitary facilities of Cayacal I	2022	0.2	1		Comply
		2023	0.2			Comply
	Sanitary facilities of Cayacal II	2022	0.2	1		Comply
		2023	0.2			Comply
	Health workers at the emergency center	2022	0.2	1		Comply
		2023	0.2			Comply
	General Directorate Sanitary Workers	2022	0.2	1		Comply
		2023	0.2			Comply
	Sanitary Operations Management	2022	0.2	1		Comply
		2023	0.2			Comply
	Health workers of the island of En Medio	2022	0.2	1		Comply
		2023	0.2			Comply
	Malecon toilets	2022	0.2	1		Comply





	Sanitary facilities for administrative offices	2023	0.2	1	m/L	Comply
		2022	0.2			Comply
	Eréndira Beach toilets	2023	0.2	1		Comply
		2022	0.2			Comply
	Police Fiscal Health Services	2023	0.2	1		Comply
		2022	0.2			Comply
	Sanitary Facilities of the Fiscalized Precinct	2023	0.2	1		Comply
		2022	0.2			Comply
	Sanitarium Of The Theater Of The Malecón	2023	0.2	1		Comply
		2022	0.2			Comply
Control Tower Toilets	2023	0.2	1	Comply		
	2022	0.2		Comply		
Sedimentable solids	Customs Sanitary	2023	0.4	2	mg/L	Comply
		2022	0.2			Comply
	ASLA Sanitary Workers	2023	0.4	2		Comply
		2022	0.3			Comply
	Sanitary facilities of Cayacal I	2023	0.7	2		Comply
		2022	0.2			Comply
	Sanitary facilities of Cayacal II	2023	0.5	2		Comply
		2022	0.3			Comply
	Health workers at the emergency center	2023	0.7	2		Comply
		2022	0.3			Comply
	General Directorate Sanitary Workers	2023	0.5	2		Comply
		2022	0.1			Comply
	Sanitary Operations Management	2023	0.7	2		Comply
		2022	0.1			Comply
	Health workers of the island of En Medio	2023	0.2	2		Comply
		2022	0.2			Comply
	Malecon toilets	2023	0.4	2		Comply
		2022	0.2			Comply
	Sanitary facilities for administrative offices	2023	0.3	2		Comply
		2022	0.2			Comply
	Eréndira Beach toilets	2023	0.4	2		Comply
		2022	0.1			Comply
	Police Fiscal Health Services	2023	0.8	2		Comply
		2022	0.2			Comply
	Sanitary Facilities of the Fiscalized Precinct	2023	0.3	2		Comply
		2022	0.3			Comply
	Sanitarium Of The Theater Of The Malecón	2023	0.6	2		Comply
		2022	0.1			Comply
	Control Tower Toilets	2023	0.7	2		Comply
		2022	0.1			Comply
Total suspended solids	Customs Sanitary	2023	0.4	200	mg/L	Comply
		2022	26.67			Comply
	ASLA Sanitary Workers	2023	0.5	200		Comply
		2022	0.7			Comply
	Sanitary facilities of Cayacal I	2023	0.5	200		Comply
		2022	0.7			Comply
	Sanitary facilities of Cayacal II	2023	0.2	200		Comply
		2022	0.7			Comply
	Health workers at the emergency center	2023	0.3	200		Comply
		2022	0.4			Comply



	General Directorate Sanitary Workers	2022	0.4	200	Comply
		2023	0.8		Comply
	Sanitary Operations Management	2022	0.3	200	Comply
		2023	0.6		Comply
	Health workers of the island of En Medio	2022	0.7	200	Comply
		2023	10		Comply
	Malecon toilets	2022	9.47	200	Comply
		2023	7.1		Comply
	Sanitary facilities for administrative offices	2022	9	200	Comply
		2023	12		Comply
	Eréndira Beach toilets	2022	12,22	200	Comply
		2023	12		Comply
	Police Fiscal Health Services	2022	9	200	Comply
		2023	10		Comply
	Sanitary Facilities of the Fiscalized Precinct	2022	7.37	200	Comply
		2023	9		Comply
	Restrooms at the Malecón Theater	2022	12.94	200	Comply
		2023	12.79		Comply
Control Tower Sanitary Facilities	2022	11.7	200	Comply	
	2023	8		Comply	

NOM-001-SEMARNAT-2021

Parameter	MEASUREMENT OF THE INDICATOR					
Arsenic	Location	First semester	Result	MAXIMUM PERMISSIBLE LIMITS	UNIT	OBSERVATIONS
	Customs Sanitary	2023	0.001	0.4	mg/L	Comply
		2024	0.005			Comply
	ASLA Sanitary Workers	2023	0.001	0.4		Comply
		2024	0			Comply
	Sanitary facilities of Cayacal I	2023	0.001	0.4		Comply
		2024	0.0062			Comply
	Sanitary facilities of Cayacal II	2023	0.001	0.4		Comply
		2024	0.005			Comply
	Health workers at the emergency center	2023	0.001	0.4		Comply
		2024	0.0057			Comply
	General Directorate Sanitary Workers	2023	0.001	0.4		Comply
		2024	0.005			Comply
	Sanitary Operations Management	2023	0	0.4		Comply
		2024	0			Comply
	Sanitary workers of the island of En Medio	2023	0.001	0.4		Comply
		2024	0.0078			Comply
	Malecon toilets	2023	0	0.4		Comply
		2024	0			Comply
	Sanitary facilities for administrative offices	2023	0.001	0.4		Comply
2024		0.005	Comply			
Eréndira Beach toilets	2023	0.001	0.4	Comply		
	2024	0		Comply		
	2023	0.001	0.4	Comply		



	Police Fiscal Health Services	2024	0.0054		Comply
	Sanitary Facilities of the Fiscalized Precinct	2023	0.001	0.4	Comply
		2024	0.0079		Comply
	Restrooms at the Malecón Theater	2023	0	0.4	Comply
		2024	0		Comply
	Control Tower Sanitary Facilities	2023	0.001	0.4	Comply
2024		0.005	Comply		
Cadmium	Customs Sanitary	2023	0.005	0.4	Comply
		2024	0.018		Comply
	ASLA Sanitary Workers	2023	0.005	0.4	Comply
		2024	0		Comply
	Sanitary facilities of Cayacal I	2023	0.005	0.4	Comply
		2024	0.010		Comply
	Sanitary facilities of Cayacal II	2023	0.005	0.4	Comply
		2024	0.010		Comply
	Health workers at the emergency center	2023	0.005	0.4	Comply
		2024	0.01		Comply
	General Directorate Sanitary Workers	2023	0.005	0.4	Comply
		2024	0.01		Comply
	Sanitary Operations Management	2023	0	0.4	Comply
		2024	0		Comply
	Health workers of the island of En Medio	2023	0.005	0.4	Comply
		2024	0.01		Comply
	Malecon toilets	2023	0	0.4	Comply
		2024	0		Comply
	Sanitary facilities for administrative offices	2023	0.005	0.4	Comply
		2024	0.01		Comply
	Eréndira Beach toilets	2023	0.005	0.4	Comply
		2024	0		Comply
	Police Fiscal Health Services	2023	0.005	0.4	Comply
		2024	0.010		Comply
Sanitary Facilities of the Fiscalized Precinct	2023	0.005	0.4	Comply	
	2024	0.010		Comply	
Sanitarium Of The Theater Of The Malecón	2023	0	0.4	Comply	
	2024	0		Comply	
Control Tower Toilets	2023	0.005	0.4	Comply	
	2024	0.017		Comply	
Cyanides	Customs Sanitary	2023	0.020	3	Comply
		2024	0.020		Comply
	ASLA Sanitary Workers	2023	0.020	3	Comply
		2024	0		Comply
	Sanitary facilities of Cayacal I	2023	0.020	3	Comply
		2024	0.020		Comply
	Sanitary facilities of Cayacal II	2023	0.020	3	Comply
		2024	0.020		Comply
	Health workers at the emergency center	2023	0.02	3	Comply
		2024	0.020		Comply
	General Directorate Sanitary Workers	2023	0.02	3	Comply
		2024	0.020		Comply
		2023	0	3	Comply





	Sanitary Operations Management	2024	0	3	mg/L	Comply
	Health workers of the island of En Medio	2023	0.02			Comply
		2024	0.020			Comply
	Malecon toilets	2023	0			Comply
		2024	0			Comply
	Sanitary facilities for administrative offices	2023	0.02			Comply
		2024	0.020			Comply
	Eréndira Beach toilets	2023	0.02			Comply
		2024	0			Comply
	Police Fiscal Health Services	2023	0.02			Comply
		2024	0.02			Comply
	Sanitarium Of The Precinct Inspected	2023	0.02			Comply
2024		0.02	Comply			
Sanitarium Of The Theater Of The Malecón	2023	0	Comply			
	2024	0	Comply			
Control Tower Toilets	2023	0.02	Comply			
	2024	0.02	Comply			
Copper	Customs Sanitary	2023	0.1	6	mg/L	Comply
		2024	0.250			Comply
	ASLA Sanitary Workers	2023	0.1	6		Comply
		2024	0			Comply
	Sanitary facilities of Cayacal I	2023	0.1	6		Comply
		2024	0.250			Comply
	Sanitary facilities of Cayacal II	2023	0.1	6		Comply
		2024	0.250			Comply
	Health workers at the emergency center	2023	0.1	6		Comply
		2024	0.250			Comply
	General Directorate Sanitary Workers	2023	0.1	6		Comply
		2024	0.250			Comply
	Sanitary Operations Management	2023	0	6		Comply
		2024	0			Comply
	Health workers of the island of En Medio	2023	0.1	6		Comply
		2024	0.250			Comply
	Malecon toilets	2023	0	6		Comply
		2024	0			Comply
	Sanitary facilities for administrative offices	2023	0.1	6		Comply
		2024	0.250			Comply
	Eréndira Beach toilets	2023	0.1	6		Comply
		2024	0			Comply
	Police Fiscal Health Services	2023	0.1	6		Comply
		2024	0.25			Comply
Sanitary Facilities of the Fiscalized Precinct	2023	0.1	6	Comply		
	2024	0.25		Comply		
Restrooms at the Malecón Theater	2023	0	6	Comply		
	2024	0		Comply		
Control Tower Sanitary Facilities	2023	0.1	6	Comply		
	2024	0.25		Complete		
Zinc	Customs Sanitary	2023	0.1	20	mg/L	Comply
		2024	0.200			Comply





	ASLA Sanitary Workers	2023	0.1	20	NMP/ 100 mL	Comply
		2024	0			Comply
	Sanitary facilities of Cayacal I	2023	0.1	20		Comply
		2024	0.200			Comply
	Sanitary facilities of Cayacal II	2023	0.1	20		Comply
		2024	0.200			Comply
	Health workers at the emergency center	2023	0.1	20		Comply
		2024	0.2			Comply
	General Directorate Sanitary Workers	2023	0.1	20		Comply
		2024	0.2			Comply
	Sanitary Operations Management	2023	0	20		Complete
		2024	0			Comply
	Health workers of the island of En Medio	2023	0.1	20		Comply
		2024	0.2			Comply
	Malecon toilets	2023	0	20		Comply
		2024	0			Comply
	Sanitary facilities for administrative offices	2023	0.1	20		Comply
		2024	0.2			Comply
	Eréndira Beach toilets	2023	0.1	20		Comply
		2024	0			Comply
	Police Fiscal Health Services	2023	0.1	20		Comply
		2024	0.2			Comply
	Sanitary Facilities of the Fiscalized Precinct	2023	0.1	20		Comply
		2024	0.2			Comply
Sanitarium Of The Theater Of The Malecón	2023	0	20	Comply		
	2024	0		Comply		
Control Tower Toilets	2023	0.1	20	Comply		
	2024	0.2		Comply		
Fecal coliforms	Customs Sanitary	2023	26	2000	Comply	
		2024	3		Comply	
	ASLA Sanitary Workers	2023	33	2000	Comply	
		2024	0		Comply	
	Sanitary facilities of Cayacal I	2023	35	2000	Comply	
		2024	9		Comply	
	Sanitary facilities of Cayacal II	2023	28	2000	Comply	
		2024	94		Comply	
	Health workers at the emergency center	2023	270	2000	Comply	
		2024	150		Comply	
	General Directorate Sanitary Workers	2023	36	2000	Comply	
		2024	4		Comply	
	Sanitary Operations Management	2023	0	2000	Comply	
		2024	0		Comply	
	Health workers of the island of En Medio	2023	33	2000	Comply	
		2024	5		Comply	
	Malecon toilets	2023	0	2000	Comply	
		2024	0		Comply	
	Sanitary facilities for administrative offices	2023	31	2000	Comply	
		2024	11		Comply	
Eréndira Beach toilets	2023	200	2000	Comply		
	2024	0		Comply		





	Police Fiscal Health Services	2023	31	2000		Comply
		2024	84			Comply
	Sanitary Facilities of the Fiscalized Precinct	2023	51	2000		Comply
		2024	75			Comply
	Restrooms at the Malecón Theater	2023	0	2000		Comply
		2024	0			Comply
Control Tower Toilets	2023	307	2000	Comply		
	2024	3		Comply		
Total Chromium	Customs Sanitaries	2023	0.05	1.5	mg/L	Comply
		2024	0.05			Comply
	ASLA Health Care	2023	0.05	1.5		Comply
		2024	0			Comply
	Sanitary facilities of Cayacal I	2023	0.05	1.5		Comply
		2024	0.05			Comply
	Sanitary facilities of Cayacal II	2023	0.05	1.5		Comply
		2024	0.05			Comply
	Health workers at the emergency center	2023	0.05	1.5		Comply
		2024	0.05			Comply
	General Directorate Sanitary Workers	2023	0.05	1.5		Comply
		2024	0.05			Comply
	Sanitary Operations Management	2023	0	1.5		Comply
		2024	0			Comply
	Health workers of the island of En Medio	2023	0.05	1.5		Comply
		2024	0.05			Comply
	Malecon toilets	2023	0	1.5		Comply
		2024	0			Comply
	Sanitary facilities for administrative offices	2023	0.05	1.5		Comply
		2024	0.05			Comply
Eréndira Beach toilets	2023	0.05	1.5	Comply		
	2024	0		Comply		
Police Fiscal Health Services	2023	0.05	1.5	Comply		
	2024	0.05		Comply		
Sanitary Facilities of the Fiscalized Precinct	2023	0.05	1.5	Comply		
	2024	0.05		Comply		
Restrooms at the Malecón Theater	2023	0	1.5	Comply		
	2024	0		Comply		
Control Tower Sanitary Facilities	2023	0.05	1.5	Comply		
	2024	0.05		Comply		
Biochemical oxygen demand	Customs Sanitary	2023	27.9	200	mg/L	Comply
		2024	2			Comply
	ASLA Sanitary Workers	2023	27.8	200		Comply
		2024	0			Comply
	Sanitary facilities of Cayacal I	2023	22.68	200		Comply
		2024	2			Comply
	Sanitary facilities of Cayacal II	2023	26.64	200		Comply
		2024	5			Comply
	Health workers at the emergency center	2023	20.04	200		Comply
		2024	86.7			Comply
General Directorate Sanitary Workers	2023	20.7	200	Comply		
	2024	29		Comply		
		2023	0	200	Comply	





	Sanitary Operations Management	2024	0			Comply	
	Health workers of the island of En Medio	2023	26.7	200		Comply	
		2024	2			Comply	
	Malecon toilets	2023	0	200		Comply	
		2024	0			Comply	
	Sanitary facilities for administrative offices	2023	22.02	200		Comply	
		2024	100			Comply	
	Eréndira Beach toilets	2023	23.4	200		Comply	
		2024	0			Comply	
	Police Fiscal Health Services	2023	25.32	200		Comply	
		2024	8.3			Comply	
	Sanitary Facilities of the Fiscalized Precinct	2023	27.8	200		Comply	
		2024	6			Comply	
	Sanitarium Of The Theater Of The Malecón	2023	0	200		Comply	
2024		0			Comply		
Control Tower Toilets	2023	21.1	200		Comply		
	2024	23			Comply		
Total phosphorus	Customs Sanitary	2023	0.67	30		Comply	
		2024	0.8			Comply	
	ASLA Sanitary Workers	2023	0.91	30		Comply	
		2024	0			Comply	
	Sanitary facilities of Cayacal I	2023	0.92	30		Comply	
		2024	0.15			Comply	
	Sanitary facilities of Cayacal II	2023	0.95	30		Comply	
		2024	1,004			Comply	
	Health workers at the emergency center	2023	0.85	30		Comply	
		2024	12,676			Comply	
	General Directorate Sanitary Workers	2023	0.84	30		Comply	
		2024	14,234			Comply	
	Sanitary Operations Management	2023	0	30		Comply	
		2024	0			Comply	
	Health workers of the island of En Medio	2023	0.74	30	mg/L	Comply	
		2024	0.547				Comply
	Malecon toilets	2023	0	30		Comply	
		2024	0			Comply	
	Sanitary facilities for administrative offices	2023	0.91	30		Comply	
		2024	8,479			Comply	
	Eréndira Beach toilets	2023	0.96	30		Comply	
		2024	0			Comply	
	Police Fiscal Health Services	2023	0.86	30		Comply	
		2024	1,051			Comply	
Sanitary Facilities of the Fiscalized Precinct	2023	0.9	30	Comply			
	2024	3,695		Comply			
Sanitarium Of The Theater Of The Malecón	2023	0	30	Comply			
	2024	0		Comply			
Control Tower Toilets	2023	0.78	30	Comply			
	2024	5,263		Comply			
Weighted average fats and oils	Customs Sanitary	2023	8,28	25		mg/L	Comply
		2024	5				Comply
		2023	8,13				25



	ASLA Sanitary Workers	2024	0			Comply
	Sanitary facilities of Cayacal I	2023	7,71	25		Comply
		2024	5			Comply
	Sanitary facilities of Cayacal II	2023	8,06	25		Comply
		2024	5,635			Comply
	Health workers at the emergency center	2023	9.59	25		Comply
		2024	18,583			Comply
	General Directorate Sanitary Workers	2023	7.55	25		Comply
		2024	11,052			Comply
	Sanitary Operations Management	2023	0	25		Comply
		2024	0			Comply
	Health workers of the island of En Medio	2023	7.77	25		Comply
		2024	5			Comply
	Malecon toilets	2023	0	25		Comply
		2024	0			Comply
	Sanitary facilities for administrative offices	2023	9.48	25		Comply
		2024	15,629			Comply
	Eréndira Beach toilets	2023	8.59	25		Comply
		2024	0			Comply
	Police Fiscal Health Services	2023	7.71	25		Comply
2024		5,626			Comply	
Sanitary Facilities of the Fiscalized Precinct	2023	8.34	25		Comply	
	2024	8,312			Comply	
Sanitarium Of The Theater Of The Malecón	2023	0	25		Comply	
	2024	0			Comply	
Control Tower Toilets	2023	8.07	25		Comply	
	2024	10,056			Comply	
Mercury	Customs Sanitary	2023	0.0005	0.02		Comply
		2024	0.0005			Comply
	ASLA Sanitary Workers	2023	0.0005	0.02		Comply
		2024	0			Comply
	Sanitary facilities of Cayacal I	2023	0.0005	0.02		Comply
		2024	0.0005			Comply
	Sanitary facilities of Cayacal II	2023	0.0005	0.02		Comply
		2024	0.0005			Comply
	Health workers at the emergency center	2023	0.0005	0.02		Comply
		2024	0.0005			Comply
	General Directorate Sanitary Workers	2023	0.0005	0.02		Comply
		2024	0.00088			Comply
	Sanitary Operations Management	2023	0	0.02		Comply
		2024	0			Comply
	Health workers of the island of En Medio	2023	0.0005	0.02		Comply
		2024	0.0005			Comply
	Malecon toilets	2023	0	0.02		Comply
		2024	0			Comply
	Sanitary facilities for administrative offices	2023	0.0005	0.02		Comply
		2024	0.0005			Comply
Eréndira Beach toilets	2023	0.0005	0.02		Comply	
	2024	0			Comply	
Police Fiscal Health Services	2023	0.0005	0.02		Comply	
	2024	0.0005			Comply	
		2023	0.0005	0.02		Comply



	Sanitary Facilities of the Fiscalized Precinct	2024	0.0005			Comply
	Restrooms at the Malecón Theater	2023	0	0.02		Comply
		2024	0			Comply
	Control Tower Sanitary Facilities	2023	0.0005	0.02		Comply
2024		0.0005			Comply	
Nickel	Customs Sanitary	2023	0.1	4		Comply
		2024	0.2			Comply
	ASLA Sanitary Workers	2023	0.1	4		Comply
		2024	0			Comply
	Sanitary facilities of Cayacal I	2023	0.1	4		Comply
		2024	0.2			Comply
	Sanitary facilities of Cayacal II	2023	0.1	4		Comply
		2024	0.2			Comply
	Health workers at the emergency center	2023	0.1	4		Comply
		2024	0.2			Comply
	General Directorate Sanitary Workers	2023	0.1	4		Comply
		2024	0.2			Comply
	Sanitary Operations Management	2023	0	4		Comply
		2024	0			Comply
	Health workers of the island of En Medio	2023	0.1	4		Comply
		2024	0.2			Comply
	Malecon toilets	2023	0	4		Comply
		2024	0			Comply
	Sanitary facilities for administrative offices	2023	0.1	4		Comply
		2024	0.2			Comply
Eréndira Beach toilets	2023	0.1	4		Comply	
	2024	0			Comply	
Police Fiscal Health Services	2023	0.1	4		Comply	
	2024	0.2			Comply	
Sanitary Facilities of the Fiscalized Precinct	2023	0.1	4		Comply	
	2024	0.2			Comply	
Restrooms at the Malecón Theater	2023	0	4		Comply	
	2024	0			Comply	
Control Tower Sanitary Facilities	2023	0.1	4		Comply	
	2024	0.2			Comply	
Total Nitrogen	Customs Sanitary	2023	8.96	60		Comply
		2024	21,606			Comply
	ASLA Sanitary Workers	2023	10.62	60		Comply
		2024	0			Comply
	Sanitary facilities of Cayacal I	2023	9.66	60		Comply
		2024	1,247			Comply
	Sanitary facilities of Cayacal II	2023	11.2	60		Comply
		2024	20,195			Comply
	Health workers at the emergency center	2023	9.99	60		Comply
		2024	127,783			Does not comply
	General Directorate Sanitary Workers	2023	10,11	60		Comply
		2024	80,876			Does not comply
	Sanitary Operations Management	2023	0	60		Comply
		2024	0			Comply
	Health workers of the island of En Medio	2023	11.2	60		Comply
		2024	2,009			Comply
	Malecon toilets	2023	0	60		Comply
		2024	0			Comply





	Sanitary facilities for administrative offices	2023	10.69	60	mg/L	Comply	
		2024	72,577			Does not comply	
	Eréndira Beach toilets	2023	12.02	60		Comply	
		2024	0			Comply	
	Police Fiscal Health Services	2023	10,11	60		Comply	
		2024	21,873			Comply	
	Sanitary Facilities of the Fiscalized Precinct	2023	11.33	60		Comply	
		2024	34,202			Comply	
	Restrooms at the Malecón Theater	2023	0	60		Comply	
		2024	0			Comply	
	Control Tower Toilets	2023	10.51	60		Comply	
		2024	84,185			Not Complete	
	Lead	Customs Sanitary	2023	0.19		1	Comply
			2024	0.025			Comply
ASLA Sanitary Workers		2023	0.19	1	Comply		
		2024	0		Comply		
Sanitary facilities of Cayacal I		2023	0.19	1	Comply		
		2024	0.025		Comply		
Sanitary facilities of Cayacal II		2023	0.19	1	Comply		
		2024	0.025		Comply		
Health workers at the emergency center		2023	0.19	1	Comply		
		2024	0.025		Comply		
General Directorate Sanitary Workers		2023	0.19	1	Comply		
		2024	0.025		Comply		
Sanitary Operations Management		2023	0	1	Comply		
		2024	0		Comply		
Health workers of the island of En Medio		2023	0.19	1	Comply		
		2024	0.025		Comply		
Malecon toilets		2023	0	1	Comply		
		2024	0		Comply		
Sanitary facilities for administrative offices		2023	0.19	1	Comply		
		2024	0.025		Comply		
Eréndira Beach toilets		2023	0.19	1	Comply		
		2024	0		Comply		
Police Fiscal Health Services		2023	0.19	1	Comply		
		2024	0.025		Comply		
Sanitary Facilities of the Fiscalized Precinct	2023	0.19	1	Comply			
	2024	0.025		Comply			
Restrooms at the Malecón Theater	2023	0	1	Comply			
	2024	0		Comply			
Control Tower Sanitary Facilities	2023	0.19	1	Comply			
	2024	0.025		Comply			
Sedimentable solids	Customs Sanitary	2023	0.3	2	Comply		
		2024	0.1		Comply		
	ASLA Sanitary Workers	2023	0.5	2	Comply		
		2024	0		Comply		
	Sanitary facilities of Cayacal I	2023	0.2	2	Comply		
		2024	0.1		Comply		
	Sanitary facilities of Cayacal II	2023	0.1	2	Comply		
		2024	0.1		Comply		
	Health workers at the emergency center	2023	0.1	2	Comply		
		2024	0.1		Comply		
	2023	0.1	2	Comply			





	General Directorate Sanitary Workers	2024	0.1			Comply
	Sanitary Operations Management	2023	0	2		Comply
		2024	0			Comply
	Health workers of the island of En Medio	2023	0.5	2		Comply
		2024	0.1			Comply
	Malecon toilets	2023	0	2		Comply
		2024	0			Comply
	Sanitary facilities for administrative offices	2023	0.1	2		Comply
		2024	0.1			Comply
	Eréndira Beach toilets	2023	0.1	2		Comply
		2024	0			Comply
	Police Fiscal Health Services	2023	0.2	2		Comply
		2024	0.1			Comply
	Sanitary Facilities of the Fiscalized Precinct	2023	0.3	2		Comply
		2024	0.1			Comply
	Restrooms at the Malecón Theater	2023	0	2		Comply
2024		0			Comply	
Control Tower Sanitary Facilities	2023	0.1	2		Comply	
	2024	0.1			Comply	
Suspended solids totals	Customs Sanitary	2023	9	200		Comply
		2024	10			Comply
	ASLA Sanitary Workers	2023	14.13	200		Comply
		2024	0			Comply
	Sanitary facilities of Cayacal I	2023	8.51	200		Comply
		2024	10			Comply
	Sanitary facilities of Cayacal II	2023	10.31	200		Comply
		2024	14			Comply
	Health workers at the emergency center	2023	7	200		Comply
		2024	52			Comply
	General Directorate Sanitary Workers	2023	6.6	200		Comply
		2024	11			Comply
	Sanitary Operations Management	2023	0	200		Comply
		2024	0			Comply
	Health workers of the island of En Medio	2023	10.42	200		Comply
		2024	10			Comply
	Malecon toilets	2023	0	200		Comply
		2024	0			Comply
	Sanitary facilities for administrative offices	2023	6.6	200		Comply
		2024	18			Comply
	Eréndira Beach toilets	2023	6.6	200		Comply
		2024	0			Comply
	Police Fiscal Health Services	2023	8	200		Comply
		2024	15			Comply
	Sanitary Facilities of the Fiscalized Precinct	2023	8.33	200		Comply
		2024	12			Comply
	Restrooms at the Malecón Theater	2023	0	200		Comply
		2024	0			Comply
Control Tower Sanitary Facilities	2023	6.6	200		Comply	



Note: For the parameters that are indicated as non-compliant, a root cause analysis was carried out and the following corrective and remedial actions were taken at the corresponding Wastewater Treatment Plant (WWTP).

- ✓ Rehabilitation of the filtration system (tertiary system), to mitigate the presence of suspended solids and coliforms.
- ✓ It was ensured that backwashes were being carried out at a minimum frequency of one per day.
- ✓ The state of activated sludge in the treatment process was reviewed and in this case, the stabilization of the WWTP by means of nutrients was considered, adding molasses and other types of nutrients rich in carbon.
- ✓ The correct disposal or disposal of poorly biodegradable substances is monitored.

Significant environmental issues at the port of Lázaro Cárdenas.	Index element	Calculation method	Target value	Presentation of the indicator (calculation details)		Comments
				2022	2023	
Perimeter noise	Annual evaluation of the perimeter noise in the environment emitted by fixed sources in the port area of Lázaro Cárdenas	The Mexican official standard NOM-081-SEMARNAT-1994 establishes the maximum permissible limits of noise emissions from fixed sources and its measurement method.	ZONE. - Industrial and Commercial. SCHEDULE. - Day 06:00 to 22:00 Night 22:00 to 06:00 MAXIMUM PERMISSIBLE LIMIT (dB). - Daytime 68 dB Night 65 dB	DAY North – 62.8 South - 62.5 East - 65.6 West – 0 NIGHT North – 62.9 South - 62.9 East - 65.0 West – 0	DAY North – 59.2 South - 0 East - 64.4 West – 66.7 NIGHT North – 0 South - 0 This - 0 West – 55.9	Comply

Significant environmental issues at the port of Lázaro Cárdenas.	Index element	Calculation method	Target value	Presentation of the indicator (calculation details)	Significant environmental issues at the port of Lázaro Cárdenas.	Index element
				2022	2023	1st semester 2024
Environmental Accidents	Environmental accidents at the Port of Lázaro Cárdenas (irreversible damage) in administrative areas and common areas of ASIPONA.	# of environmental accidents with irreversible damage in the year to be assessed / # of environmental accidents with irreversible damage in the previous year x 100	1.- Zero environmental accidents with irreversible damage to the environment 2.- Reduce environmental accidents with reversible damage to the environment	1.- 0 2.- 100% increase (3 incidents)	1.- 0 2.- Increase 200% (6 incidents)	1.- 0 2.- Decrease 100% (0 incidents)

Environmental issues at the port of Lázaro Cárdenas.	Index element	Calculation method	Target value	Presentation of the indicator (calculation details)		
				2022	2023	1st semester 2024
Carbon Dioxide (CO2) Emission	Estimate carbon dioxide emissions from non-renewable electricity consumption	Energy Consumption x GHG Emission Factor	CO2 emissions	716,818,761 kg CO2e	752,733,576 kg CO2e	460,500,642 kg CO2e

Environmental issues at the port of Lázaro Cárdenas.	Index element	Calculation method	Target value	Presentation of the indicator (calculation details)		
				2022	2023	1st semester 2024
Zero Carbon Dioxide (CO2) Emissions	Estimate the carbon dioxide emissions avoided by renewable electricity consumption	Energy Consumption x GHG Emission Factor	CO2 emissions avoided	480,073,275 kg CO2e	463,665,105 kg CO2e	246,743,514 kg CO2e

Management performance indicator:

Administrative issues	Index element	Course name(s)	Cost	Period.	(a) No. of CSHMA Members and port community personnel, attendees	(a) No. of CSHMA Members and port community personnel scheduled	Result:
							(a)/(b)*100
Environmental training for members of the Safety, Hygiene and Environment Commission of the Port of Lázaro Cárdenas (CSHMA)	Attendance at training courses	Waste management and disposal	N/A	28/7/2022	27	27	100%
		Hazardous Materials Handling	N/A	July 11 and 12, 2023	47	47	100%
		NOM-025-SSA1-2021 (PM 10, PM 2.5)	N/A	4/19/2024	25	25	100%
		NOM-172-SEMARNAT-2023 (air quality and health indices)	N/A	4/19/2024	25	25	100%
		Dangerous Goods Workshop	N/A	4/7/2024	20	20	100%
		NOM-019-STPS-2011, Constitution, Integration, Organization and Operation of the Safety and Hygiene Commissions	N/A	8/16/2024	19	19	100%

Administrative issues	Index element	Course name(s)	Cost	Period.	(a) No. of attending employees	(b) No. of scheduled employees	Result: (a)/(b)*100
Environmental training:	Attendance at ASIPONA personal training courses	Dangerous Goods according to IMDG code	NA	06/27/2022	3	3	100%
		Environmental Impact	\$75,600.00	04/19/2023 – 04/20/2023	3	3	100%

Environmental issues at the port of Lázaro Cárdenas.	Index element	Calculation method	Target value	Presentation of the indicator (calculation details)		
				2022	2023	1st semester 2024
Inspections of port terminals	Estimate the number of routes of the Port Safety, Health and Work Environment Commission.	(Number of visits made)/(Number of visits scheduled)*100	Visits made	60/60*100=100%	60/60*100=100%	30/30*100=100%

Environmental issues at the port of Lázaro Cárdenas.	Index element	Calculation method	Target value	Presentation of the indicator (calculation details)		
				2022	2023	1st semester 2024
Inspections of port terminals	Estimate the number of observations attended to during the tours of the Port Safety, Health and Work Environment Commission.	(No. of Environmental observations detected) / (No. of Environmental observations addressed) * 100	Observations (ENVIRONMENTAL IMPACT/ POLLUTION/ BREACH OF CONTRACT)	15/16*100= 93.75%	31/31*100= 100%	7/24*100= 29.26%

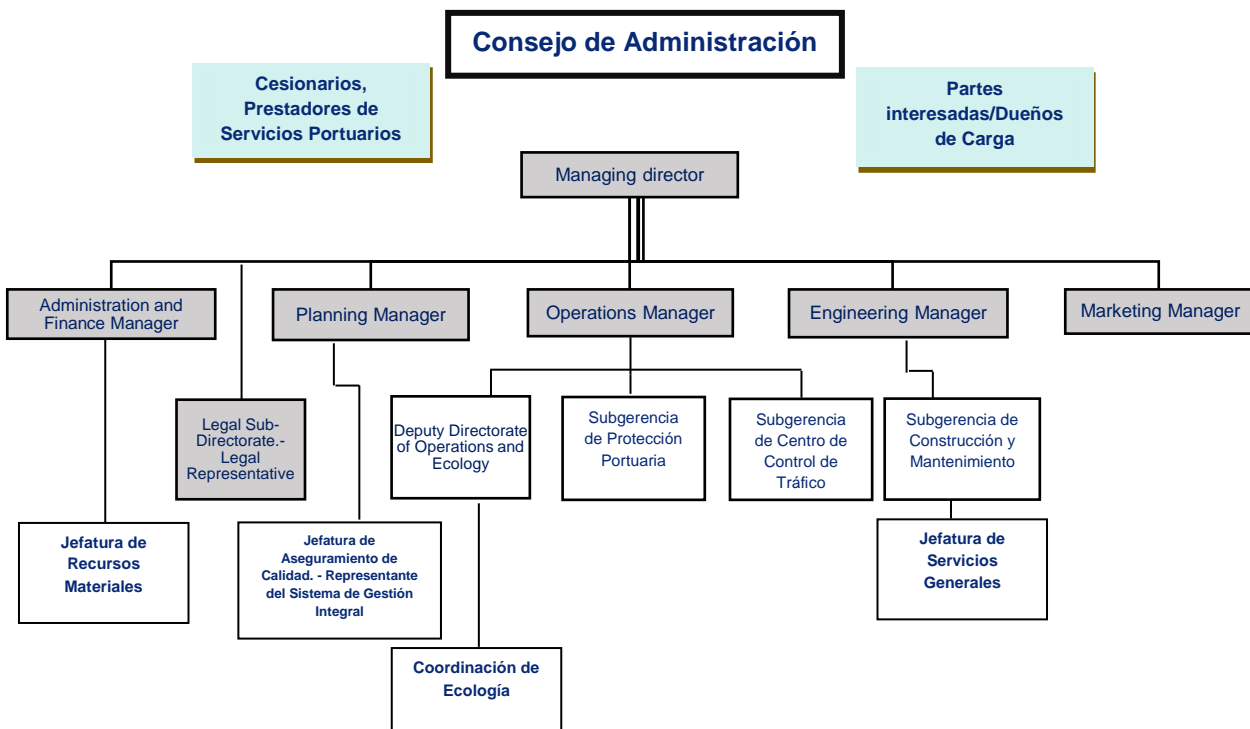


ORGANIZATIONAL DESCRIPTION OF ENVIRONMENTAL MANAGEMENT

The Entity has mechanisms that provide human resources according to the needs of the organization, through an efficient organic structure, selection of appropriate personnel, training, continuous improvement, performance evaluations and teamwork that allows for making appropriate decisions.

The highest authority of the Lázaro Cárdenas National Port System Administration is the Board of Directors (Federal Government and shareholders), which elects the General Director and Managers in Board meetings, who in turn select and appoint key personnel such as Assistant Managers, Department Heads and Coordinators.

Below is the organizational structure with the Senior Management (Director and Managers and Legal Assistant Manager) and personnel whose functions or activities are directly related to the environment:



The port of Lázaro Cárdenas allocates the necessary resources (human and financial) to facilitate environmental management.

The Director General of ASIPONA appoints the person responsible for the Environmental Management System, who coordinates the port's environmental management, guarantees compliance with the port's environmental policy, ensuring that the environmental management program is implemented, reviewed and updated. He/she follows up on general environmental issues within and outside the organization with concessionaires and service providers and ensures the quarterly review of the Environmental Management System.

Regarding financial resources, the port allocates a budget for Training (in environmental matters), Certifications (Clean Industry, ISO 14000, ECOPORT), Environmental Consulting, Dissemination (Environmental), Water, air and noise monitoring studies, Maintenance of Wastewater Treatment Plants and Maintenance of green areas.

Management / Department	Activities	Allocated Budget (National Currency)	Budget Exercised 2023	Frequency	Comments
Quality	Certification Mantle in the Integrated Management System ISO 9001:2015, ISO 14001:2015 and ISO 45001:2018	\$ 120,000.00	\$105,695.12	Quarterly	Trinorm Certification Audit of the ISO 9001:2015 Quality Management System, ISO 14001:2015 Environmental Management System and ISO 45001:2018 Occupational Health and Safety System standards.
Human Resources	Environmental Training	\$ 75,600.00	\$75,600.00		Training was provided through the Port's Health, Safety and Environment Commission, in collaboration with the Entity, providing them with the location and computer equipment for the connections.
Ecology	Consulting Services for Clean Industry/Environmental Quality Issues	\$ 334,00.00	\$334,00.00		The Budgeted Amount Covers Both Services
	Endorsement of the Environmental Quality Certificate				
Ecology	Reforestation Program	\$ 150,000.00	\$ 150,000.00		Reforestation will be carried out in the "The Manglito" Ecological Urban Park once the compensation program is authorized for the projects to be developed in the port area.
Ecology	Air Quality Monitoring	\$ 164,000.00	\$ 164,000.00		Completed Studies
Ecology	Analysis of wastewater discharges	\$2,891,485.08	\$2,891,485.08	Services performed.	

Ecology	Perimeter Noise Study	\$ 21,000.00	\$ 21,000.00		Completed Studies
Ecology	Payment of Fees for Extensions of Environmental Impact Statements	\$ 100,000.00	\$ 80,000.00		Fees for processing extensions of environmental impact statements
Engineering	Maintenance and Conservation of Ecological Areas	\$13,343,343.00	\$13,343,343.00		Irrigation systems were installed in the green areas, activities were added to this contract, cleaning of weeds in common areas and roads.
Engineering	Maintenance of sewage treatment plants in the port area of Lázaro Cárdenas, Mich.	\$4,116,566.91	\$4,116,566.91		In the first quarter, composite tests were carried out on wastewater treatment plants and water quality tests were carried out on drinking water plants.

ENVIRONMENTAL ACTIONS (EXAMPLES) AND PROJECTS:

ASIPONA Lázaro Cárdenas assumes its ecological-environmental commitment by giving value and preponderance to the protection and improvement of the environment as an important factor in social well-being and its surroundings, for which it determines the relevant interested parties related to its environment and the understanding of their needs and expectations.

Actions implemented in Strategic Plans for GEI reduction in ASIPONA Lázaro Cárdenas.

No.	Actions implemented
Impact on Scopes 1, 2 and 3	
1.	Awareness of the port community on the impact of GEI emissions.
2.	Change of lighting.
3.	Air quality studies within the limits of the port area.
4.	Analysis of the feasibility of supplying electricity to ships.
5.	Mangrove reforestation program.
6.	Conveyor belts closed to avoid dust emissions created by the thermoelectric plant that uses coal as its primary energy source.
7.	Maintenance / Replacement of air conditioners.
8.	Publication of the Air Quality Operating Rule.

9. Monitoring of total emissions from ASIPONA, assignees and vessels.

10. Installation of solar panels.

SCOPE 1. DIRECT EMISSIONS. These sources are directly controlled and operated by the entity, including fleets of vehicles owned or leased by the entity, boilers and furnaces in buildings, cargo handling equipment leased or owned by the port, and any other emission source owned and operated by the ASIPONA authority.

SCOPE 2. INDIRECT EMISSIONS. Electricity purchased for ASIPONA buildings and operations (Purchased power by tenants is excluded).

SCOPE 3. OTHER INDIRECT SOURCES. These include ships, trucks, cargo handling equipment, locomotives, port service vessels, leased buildings, electricity purchased by tenants, and port employee vehicles. For a port with a large number of tenants, this source is likely to be the most important source of greenhouse gas emissions.

INTERESTED PART	INTERNAL (I) EXTERNAL (E)	JUSTIFICATION	NEED OR EXPECTATION
ASIPONA Senior Management	I	Implementation of sustainable strategies and actions.	Generate a development and exploitation of the port that is harmonious with the environment and efficient and effective in its operation.
ASIPONA Staff		Carry out and collaborate in the execution of environmental programs.	Work areas free of contamination and waste accumulation; Homes free of contaminating impacts.
Citizens and neighbors	E	Balance between the environment, society and the economy.	Areas free of noise pollution, discharge into aquifers, or particles suspended in the air, free of visual or auditory pollution.
Regulatory Authorities (SEMARNAT/PROFEPA/CONAGUA).	E	Regulates compliance with environmental laws.	Comply with environmental legislation established by the government.
Assignees	E	They contribute investment to the port and collaborate with its sustainable development.	That the areas assigned to them under the partial transfer of rights scheme are free of environmental problems to allow for easy installation and development; that the areas in the port are designated according to the type of goods handled to avoid contamination or damage to cargo and goods.
Service Providers	E	They provide service and supplies to the vessels and their passengers.	Ensure that the areas where services are provided or operations are carried out are free of environmental problems.



Suppliers and contractors	E	They provide a service, input or works and maintenance to the port.	Comply with the entity's environmental policy and regulations.
Municipal government	E	Implement laws and grant permits on environmental issues.	Compliance with the laws.
State Government	E	Implement laws and grant permits on environmental issues.	Compliance with the laws.
Federal Government	E	Implement laws and grant permits on environmental issues.	Compliance with the laws.
Board of Directors	I	Monitor the management and conduct of ASIPONA, its management and results.	Compliance with regulations, requirements, status, objectives and goals.
Maneuverers	E	Those responsible for the transfer of goods within the port.	Ensure that the areas where services are provided or operations are carried out are free of environmental problems.

In this way, and taking into consideration the needs and expectations of the interested parties, environmental projects and environmental activities are developed, committing ourselves to and seeking the participation of interested parties.

The commitment of these stakeholders to environmental activities is reflected in their participation and involvement in various ways, which we will detail in the environmental programs.



ENVIRONMENTAL PROGRAM. - MAINTAIN THE ENVIRONMENTAL QUALITY CERTIFICATION OR ENVIRONMENTAL COMPLIANCE OF THE PORT.

Environmental Indicator:	Aim:	Strategy	Environmental Element:	
Compliance with the Action Plan	Maintain environmental quality certification.	Compliance with required actions such as the results of the environmental audit at ASIPONA.	X	Air
			X	Water
			X	Floor
			NA	Other Resources

Calculation	Goal:	Measurement:						
Percentage of compliance with the action plan	100% Activities Completed.	Unit		Quarter 1	Quarter 2	Quarter 3	Quarter 4	Accumulated 2023
		Goal	%	25%	25%	25%	25%	100%
		Real	%	0%	0%	25%	75%	100%

Activity		Observations
1	Follow-up to reports requested by PROFEPA.	In the 4th quarter, statistical data was captured in the system.
2	Annual Report of Specific Indicators.	In the 4th Quarter, statistical data was captured in the system.
3	Indicators for specific environmental performance through historical data.	On August 24, PROFEPA issues acknowledgment of registration of environmental indicators and savings.
4	Follow-up to environmental diagnosis.	SAAEL system is fed with statistical data.

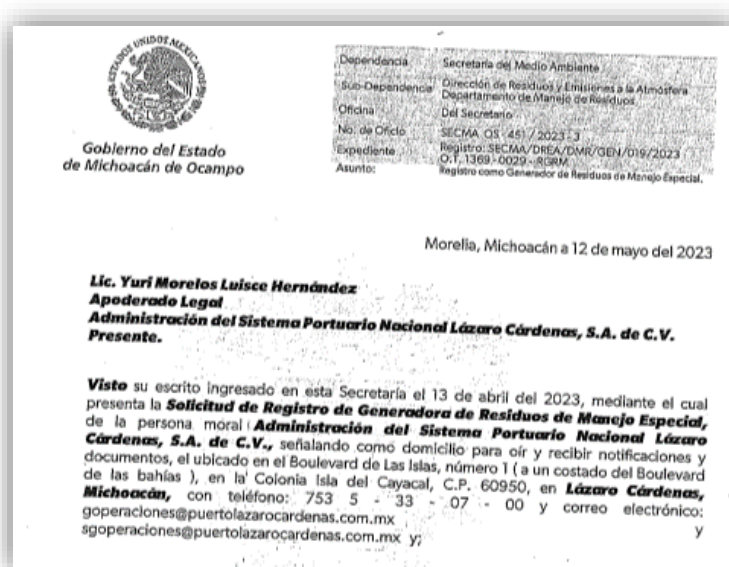


ENVIRONMENTAL PROGRAM. – CONTROL OF THE REDUCTION OF SPECIAL MANAGEMENT WASTE.

Environmental Indicator:	Aim:	Strategy	Environmental Element:	
Compliance with the Activity Plan.	Control of special handling waste (garbage), for its recovery.	Compliance with the Special Management Plan and all registration conditions.	X	Air
			X	Water
			X	Floor
			X	Other Resources

Calculation	Goal:	Measurement:						
		Unit		Quarter 1	Quarter 2	Quarter 3	Quarter 4	Accumulated 2023
Scheduled Activities / Activities Carried Out	100% of activities completed to obtain registration.	Goal	%	25%	25%	25%	25%	100%
		Real	%	12%	38%	25%	25%	100%

Activity		Observations
1	Get RME Generator Record.	On May 12, 2023, SECMA issues registration,
2	Authorization of the Special Waste Management Plan	SECMA authorizes Special Management Plan.
3	Recycling Recyclable Waste in Specialized Collection Centers	On September 27, 2023, ASIPONA prepares the first semi-annual report on the management of special waste handling in accordance with the registration conditions.
4	Promote the separation of MSW through talks to staff and disseminate the best environmental practices through electronic means	Awareness talks are given.



ENVIRONMENTAL PROGRAM. – EFFICIENT CONSUMPTION OF ELECTRICAL ENERGY, FUEL AND WATER.

Environmental Indicator:	Aim:	Strategy	Environmental Element:	
Compliance with the Annual Consumption Program 	Achieve efficient consumption of water, electricity and fuel. SDG: Ensure access to affordable, reliable, sustainable and modern energy.	Carry out an annual program for the efficient and rational use of water, fuel and electricity in ASIPONA's administrative and common areas.	X	Air
			X	Water
			X	Floor
			NA	Other Resources

Calculation	Goal:	Measurement:						
		Unit	Quarter 1	Quarter 2	Quarter 3	Quarter 4	Accumulated 2023	
Scheduled Activities / Activities Carried Out	100% activities completed.	Goal	%	25%	25%	25%	25%	100%
		Real	%	25%	25%	25%	25%	100%

Activity	Observations
1 Monitor and report the consumption of Conventional Electric Energy (CCEC) and Clean Electric Energy (CCEL).	Monthly monitoring and quarterly reporting, see reported data on page 14.
2 Monitor and report fuel consumption (CC).	Monthly monitoring and quarterly reporting, see reported data on page 15.
3 Monitor and report water consumption (WC).	Monthly monitoring and quarterly reporting, see reported data on page 15.
4 Maintenance supervision of Solar Panels in the Corporate Building, Emergency Center, Albatros Bridge and Control Tower.	Preventive maintenance of the photovoltaic panels was carried out on a monthly basis at the different sites located in the port.
5 Supervision of water pipes in ASIPONA LZC.	Verification was carried out monthly, so that water consumption could subsequently be reported to CONAGUA.
6 Supervision tours at ASIPONA Wastewater Treatment Plants (sampling, wastewater quality).	Monthly inspections were carried out in conjunction with external supervisions to the water meters and pipes in ASIPONA LC.
7 Manage preventive and corrective maintenance of the Entity's vehicle fleet.	12 preventive maintenance operations and 18 corrective maintenance operations were carried out.
8 Dissemination and awareness of the efficient use of resources; Water, Electricity and Fuel in the Entity.	Dissemination on the staff's computer wallpaper or on the INTRANET on; March 5: International Energy Efficiency Day. March 22: World Water Day. April 22nd World Earth Day. May 17th is World Recycling Day. June 5th World Environment Day. July 11th dissemination of Urban Solid Waste Separation. August 11th dissemination of the proper disposal of batteries (ASIPONA container for the collection of used batteries). October 21st World Energy Saving Day.

DIFFUSION



'We are going to separate and reduce the volume of urban solid waste that we generate'

When separated, these residues can be reused and/or recycled.



Recycle, reuse, consume responsibly and generate less waste...

It contributes to slowing down climate change, since one of the causes of climate change is the Generation of Waste!!!



We must act now and collectively, otherwise future generations will have no choice. And that should be our legacy!

ENVIRONMENTAL PROGRAM. – WASTE WATER QUALITY

Environmental Indicator:	Aim:	Strategy	Environmental Element:	
Compliance with the Activity Plan.	Monitor the performance of wastewater treatment plants through discharge analysis. SDG: Ensure availability and sustainable management of water and sanitation for all. 	Data monitoring and analysis.	na	Air
			X	Water
			X	Floor
			na	Other Resources

Calculation	Goal:	Measurement:						
		Unit		Quarter 1	Quarter 2	Quarter 3	Quarter 4	Accumulated 2023
Scheduled Activities / Activities Carried Out	100% of activities executed.	Goal	%	25%	25%	25%	25%	100%
		Real	%	12%	38%	25%	25%	100%

Activity		Observations
1	Water quality monitoring studies-	Monitoring was carried out quarterly through a Laboratory accredited by the Mexican Accreditation Entity, AC
2	Execution of the preventive maintenance program for wastewater treatment plants.	Maintenance is carried out on a monthly basis at the treatment plants registered with CONAGUA.
3	Monthly monitoring of the Administration's wastewater discharge.	Readings are taken at the treatment plants on a monthly basis.
4	Pollutant transfer record through annual operation certificate (COA).	In April 2023, the parameters of the analysis of wastewater discharges were captured in the national electronic processing system SINATEC.

HABITAT CARE, FLORA AND FAUNA.

Mangrove seed collection is carried out during production periods, in the region's estuaries that have mangroves. The collection is carried out in coordination with the Navy, for which a nursery is located within the premises. Once the plant is ready, the mangrove is reforested in areas authorized by SEMARNAT.

MANGROVE RESCUE, CONSERVATION AND PRESERVATION PROGRAM.

Mangly reasons to take care of mangroves;

- Reservoir of biodiversity.
- They provide livelihoods.
- A natural wall to protect the coasts.
- Without mangroves, greater impact on flooding.
- They are disappearing at a rapid rate.



The area marked in red is intended for the conservation of biodiversity and its ecosystem services. The flora and fauna found in the port project development area are relocated here.



With the objective of creating a biological corridor with a harmonious and sustainable development of the Port, adhering to the provisions of the Environmental Legislation.

*Framework Agreement for Collaboration was signed for the Reforestation of 12,500 mangrove plants in the **The Manglito Urban Park** .*

Environmental Management Unit (UMA):

This is San Francisco Island, located within the Port Enclosure with an area of 34 hectares, intended to improve and conserve the environment and the ecological balance of the surrounding ecosystems, including the facilities and their natural elements. From an ecological point of view, it contributes to conserving the habitats that have been naturally established and the conservation of plant and animal biological diversity, especially serving as a refuge for local fauna. Special interest is taken in safeguarding species subject to special protection, endangered and rare, and especially the mangrove.



Environmental Policy. - This was voluntarily established in 2015 to contribute to the sustainable development of the port and is periodically reviewed. The policy will include management, training, implementation, review and publication of the results of the actions carried out by the Port in environmental matters.

Review of compliance with objectives.

1. Noise.

The Port of Lázaro Cárdenas, due to the type of companies installed, does not have a fixed station for monitoring noise pollution, however, periodic noise monitoring studies are carried out based on NOM-081-SEMARNAT-1994 on noise material. Recent studies from 2022 and 2023 show us that, in terms of the level of sound emitted into the environment, ASIPONA is well below the permissible limits of the Mexican Environmental Regulation. (See data on indicator performance, Page 15).

2. Improve air quality.

New methods of reducing air pollution inside the port area are implemented, with a firm commitment to protect the environment and human health. Two air quality monitoring sessions are conducted every six months in accordance with the Mexican Official Standards, NOM-052-SEMARNAT-1993, NOM-035-SEMARNAT-1993, NOM-037-SEMARNAT-1993, NOM-038-SEMARNAT-1993 and method No. 1920 of the section on electrochemistry in corrosion of the Environmental Protection Agency (EPA), and the results are compared against the ambient air quality criteria established by the Ministry of Health.

The objective of the established actions is to reduce the levels of air pollution inside the Port Area and guarantee clean air. For this reason, actions are proposed on different sectors:

- Vehicle fleet maintenance program
- Port activity: minimizing emissions in different activities
- Industry: compliance with regulations and minimisation of emissions.

(See data on indicator performance on page 15)

DECARBONIZATION OF THE TRANSPORT SECTOR: Regulate GEI emissions.

✓ 2022-2023 trust marks for the stay of motor transport in the port were implemented, improving entry-exit logistics.

Transport stay times at the port



These measures reduce emissions, air pollution and associated respiratory diseases at the local level.

CLEAN ENERGY (DECARBONIZATION: regulate GEI emissions) since 2015.



4,584 PHOTOVOLTAIC PANELS INSTALLED IN 4 STRATEGIC SITES FOR CLEAN ENERGY GENERATION.

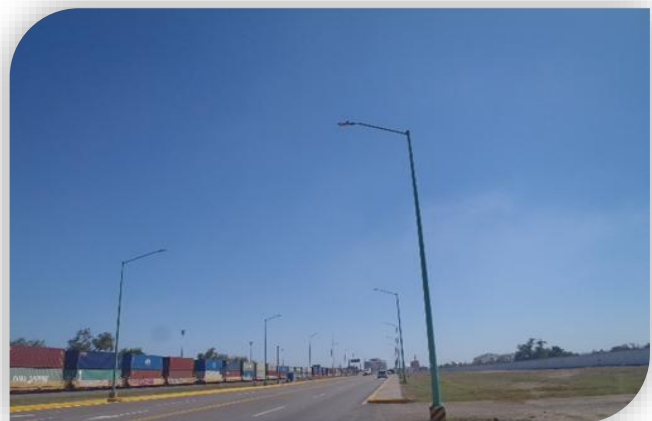
- ASIPONA Lázaro Cárdenas Corporate Building.
- “Albatros” bascule bridge.
- ASIPONA Lázaro Cárdenas Emergency and Physical Conditioning Center.
- Maritime Traffic Control Tower.

2,475 tons –CO2. Not emitted
\$13.48 million in savings.

CHANGE OF LIGHTING ON ROADS IN THE PORT AND MEDIUM-SIZED INDUSTRY AREA

From VSAP technology consumption 491,695 kWh to LED technology consumption 293,191 kWh.

Allowing a saving of 40.37%
Reduction of 0.2 tons of hazardous waste generated per year.



3. Improves analysis of wastewater discharges.

In order to preserve water quality, 11 treatment plants have been installed inside the port area to treat the water before its discharge into the river and bodies of water. Two samples are taken each quarter. Likewise, the National Water Commission - CNA - is informed about the results obtained in the quarter, in accordance with the responsibilities of the Federal Rights Law and applicable provisions regarding national waters. If any of the parameters are out of standard, another sample must be taken again at the point of discharge that was out of standard, taking into account that this will be done within the same quarter.



In order to promote the sensitivity of the assignees, through a partial transfer of rights contract, environmental compliance is indicated taking into account the compliance that the treatment plants must be subject to.

4. Ecosystem conservation.

In order to improve the green areas, wetlands and protected areas of the port area of Lázaro Cárdenas, Michoacán, there are two nurseries with an area of 600 square meters each, equipped with a sprinkler irrigation system each. Together they have the capacity to reproduce or cultivate up to 30,000 plants of different species. This achieves a greater reproduction of native plants of the region to be used in reforestation campaigns inside the port area and in the surrounding areas. The Lázaro Cárdenas Port Authority, SA de CV thus reaffirms its commitment to improving the environment and mitigating climate change. More than 100,000 native plants of the region planted from 2008 - 2023.



NURSERY 1



NURSERY 2

5. Relationship with the community.

In order to strengthen its social responsibility program and to link the care of the environment that surrounds us, reforestation events are held and donations of native plants from the region to companies near the port, schools, etc.



REFORESTATION CAMPAIGN OF THE ASIPONA LÁZARO CÁRDENAS 06-19-2023.

6. Port development (land related)

With the application of the works and activities developed in the Port Area, of the projects authorized in the Matter of Environmental Impact, for these works there is an Environmental Surveillance Committee, who supervises and verifies the application of the Environmental Surveillance Plan and compliance with the Terms and Conditions dictated by the Secretariat of Environment and Natural Resources [SEMARNAT], in the respective Environmental Impact authorizations of these projects.

Name of Construction Work, with the respective environmental impact statement authorizations	Status 2021	Status 2022	Status 2023	1st semester 2024
Southwest Channel (Bullseye)	December 16, 2021, authorization notified / Validity 3 years to carry out the stages of site preparation and construction of the project works. With a validity of 30 years for operation and maintenance	Under construction	Under construction	The work is complete, only the dredging remains.
Construction of service docks for tugboats and smaller vessels in the port of Lázaro Cárdenas SA de CV	Under MIA evaluation.	October 26, 2022, they notify authorization/Validity of twelve (12) months to carry out the stages of site preparation and construction of the project works. With a validity of 30 years for operation and maintenance Under construction	Under construction	The work is complete, only the dredging remains.
Construction of the "Cabecera Norte" storage yard on Cayacal Island		In the process of evaluation MY EXEMPTION	January 2, 2023 Notify authorization	Waiting for a budget to be allocated to execute the project.

7. Soil Pollution (Waste)

ASIPONA promotes and supervises that the Port Community adheres to current regulations on waste and that they have internal management procedures that promote the recovery of urban solid waste and special handling (garbage).

The following table shows the quantities of urban solid waste generated in the organization that, due to the amount generated annually above 10 tons, are classified and managed as special handling.

TYPE OF WASTE IN ADMINISTRATIVE AREAS		Annual Generation [KG]		
		2022	2023	1st semester 2024
ORGANIC		2,549	2,583	1,242
INORGANIC	PAPER	960	2,285	856
	ALUMINUM	0	3	16
	PLASTIC	214	621	405
	SANITARY AND OTHER NON-SEPARABLE ITEMS	13,672	12,463	4,050

TYPE OF WASTE IN COMMON AREAS		Annual Generation [KG]		
		2022	2023	1st semester 2024
ORGANIC		2,747	13,261	
INORGANIC	PAPER	1,996	7,079	2,002
	ALUMINUM	37	0	0
	PLASTIC	2,422	493	301
	SANITARY AND OTHER NON-SEPARABLE ITEMS	42,773	86,825	26,796

Concept	Year/unit	Quarter 1	Quarter 2	Quarter 3	Quarter 4	Annual generation [KG]
Percentage of urban solid waste; bond paper and plastic bottles, deposited in collection centers for recycling.	2024/kg	2,335	1,244	NA	NA	3,579.48





ASIPONA ensures that plastic bottles and their caps are separated using two types of TANKS to minimise contamination of plastic bottle waste within the port area.

✓ **Prevention of pollution from ships.**

In compliance with the international MARPOL convention, waste from ships is collected, transported, handled and disposed of. Inspection and handling are carried out at the time of collection and follow-up is provided until final disposal.



Soil pollution control, Integrated Management of Battery Waste, hazardous waste from small generators.

Since 2007, 100% of used batteries are collected at ASIPONA. The generation of this type of waste is used in its administrative activities. Once the batteries are collected, they are delivered according to the special management plan to a company authorized by the Ministry of the Environment and Natural Resources in compliance with the General Law on Ecological Balance and Environmental Protection (LGEEPA) for recycling, treatment or controlled confinement, delivering to the entity Manifests of Delivery, Transportation and Reception of Hazardous Waste.



AUDIT

Clean Industry/Environmental Quality. - In order to maintain the Clean Industry Certificate granted by PROFEPA, the Port of Lázaro Cárdenas voluntarily participated in the National Environmental Audit Program 2022-2024 in order to be evaluated on its performance and compliance with its environmental legislation, improve the efficiency of its production processes, its environmental performance and competitiveness, achieving the Verification Unit Accredited by PROFEPA.

* First semester 2024 status 32% progress in certification process.

Compliance assessment: The port is subject to review and supervision by environmental management and care agencies, primarily the Federal Attorney for Environmental Protection (PROFEPA).

ISO 14001:2015 Standard. - To ensure the maintenance and improvement of the Environmental Management System, internal audits, internal audits cross-audits with other ports, and internal audits with port terminals (assignees certified under the ISO standard), as well as external audits, have been carried out. In 2023, minor findings and observations were detected and resolved. Regarding the external audit, it was carried out by auditors from the company DNV (Det Norske Veritas).



Presentation of awards for the participation of auditors of the Assignee APM TERMINALS.



CERTIFICADO DEL SISTEMA DE GESTIÓN

Número de certificado del sitio:
CS38599-CC8

Validez:
16 octubre 2023 - 15 octubre 2026

Pertenece al número de certificado principal:
CS38599

El objetivo es certificar que el sistema de gestión implantado de forma centralizada para
ADMINISTRACIÓN DEL SISTEMA PORTUARIO NACIONAL LÁZARO CÁRDENAS, S.A. DE C.V.
BOULEVARD DE LAS ISLAS, No.1, ISLA DEL CAYACAL, C.P. 60950, LÁZARO CÁRDENAS, MICHOACÁN, MÉXICO

es conforme a la Norma del Sistema de Gestión Medioambiental:
ISO 14001:2015

Este certificado es válido para el siguiente ámbito del sitio:
Uso de Infraestructura Portuaria, la prestación de los servicios portuarios y la asignación y seguimiento de contratos de Cesión Parcial de Derechos y Obligaciones y de Prestación de Servicios Portuarios.

Lugar y fecha:
Ciudad de México, 17 noviembre 2023

Oficina de emisión:
DNV - Business Assurance
Av. Insurgentes Sur 859, Piso 7, Col. Nápoles,
C.P. 03810, Ciudad de México, México



Mauricio Venturín
Representante de la dirección

Es el sistema de gestión de toda la organización el que se certifica. La validez de este certificado depende de la validez del certificado principal.
El incumplimiento de las condiciones establecidas en el Contrato puede dar lugar a la cancelación del certificado.
ENTIDAD ACREDITADA: DNV México S.A. de C.V., Av. Insurgentes Sur 859, Piso 7, Col. Nápoles, C.P. 03810, Ciudad de México, México - TEL: +52 (55) 8526 8900.
assurance.dnv.com



This Environmental Report has been created by ASIPONA through the responsible persons and representatives of the Integrated Management System with real data, which will be updated annually and will be available for public consultation.

<http://www.puertolazarocardenas.com.mx>

